



GOVERNMENT OF SAMOA

STUDENT EDUCATION NUMBER									

Samoa Secondary Leaving Certificate

MUSIC

2023

QUESTION and ANSWER BOOKLET

Time allowed: 3 Hours & 10 minutes

INSTRUCTIONS

1. You have 10 minutes to read **before** you start the exam.
2. Write your **Student Education Number (SEN)** in the space provided on the top right-hand corner of this page.
3. **Answer ALL QUESTIONS.** Write your answers in the spaces provided in this booklet.
4. If you need more paper to write your answers, ask the Supervisor for extra paper. Write your SEN on all extra sheets used and clearly number the questions. Attach the extra sheets to the appropriate places in this booklet.

STRANDS		Pages	Time (min)	Weighting
STRAND 1	GENERAL KNOWLEDGE	2 – 6	70	40
STRAND 2	COMPOSITION	7 – 11	70	40
STRAND 3	HISTORY	12 – 15	40	20
	TOTAL		180	100

Check that this booklet contains pages 2 - 16 in the correct order and that none of these pages are blank.

HAND THIS BOOKLET TO THE SUPERVISOR AT THE END OF THE EXAMINATION.

Part 1:Performance Direction

For Questions 1 and 2, choose and write the LETTER of the correct answer in the box provided.

1. What is the musical word for two melodic ideas played simultaneously?

- A. Counterpoint
- B. Glissando
- C. Capriccio
- D. Fermata

SL 1

2. Name the musical term for the definition '*a point of repose at the end of a phrase.*'

- A. Cantata
- B. Chorale
- C. Cadenza
- D. Cadence

SL 1

3. Write the long form for **DC** and define what it means in music.

SL 2

4. **Crescendo** directs a performance to 'gradually getting louder'. Give its opposite and draw both their music symbols.

SL 3

Part 3:

Keys, Key Signatures, Scales and Chords

11. Write **ONE** octave **ascending** from each of the following scales. Do not use a key signature but put in all the necessary **sharp** or **flat** signs. Use semibreves (whole notes) and begin on the tonic.

(i) B flat major



SL 2

(ii) C melodic minor



SL 2

12. Write the correct **ascending** and **descending** octave scale for the following keys, provide the **time signatures** and use crotchet notes.

(iii) E flat major



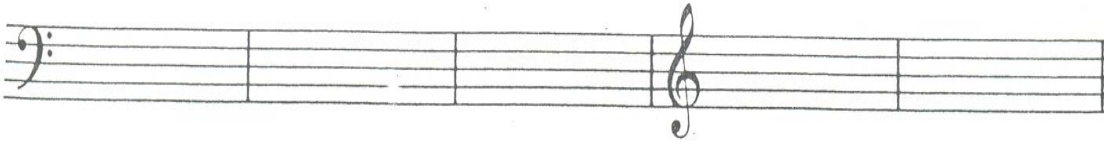
SL 3

(iv) A melodic minor



SL 3

13. Write the Key Signatures for the given Keys.



(i) E major in the Bass clef _____

SL 1

(ii) D^b major in the Treble clef _____

SL 1

Part 4:

Intervals and Chords

14. Complete the following major intervals above the given notes.

Maj 3rd Maj 6th Maj 2nd Maj 7th Perf 5th Perf 4th

(i) Maj 3rd _____

SL 1

(ii) Maj 6th _____

SL 1

(iii) Maj 2nd _____

SL 1

(iv) Maj 7th _____

SL 1

(v) Perf 5th _____

SL 1

(vi) Perf 4th _____

SL 1

15. Change each of these intervals from major to minor by changing the top note in the extra bar that follows each one using minims, crotchets, quavers and semiquavers for each (i, ii, iii, iv).

Maj 3rd Maj 6th Maj 2nd Maj 7th

(i) Maj 3rd _____

SL 2

(ii) Maj 6th _____

SL 2

(iii) Maj 2nd _____

SL 2

(iv) Maj 7th _____

SL 2

Triads are also known as *chords*, *harmony* and *chord progressions*.
Use your understanding of triads to answer the questions that follow.

16. How many notes are there in a triad and why?

SL 2

17. Name the **THREE** notes in a triad, and explain their importance in building chords.

SL 3

18. State **FOUR** types of triads, and explain each of their qualities.

SL 4

21. Compose a five- bar melody. Use the time signature 4/4, and must consist of a/ or few rests. Apply at least two or three performance dynamics.

SL 4

Part 5: Key Transposition

Study the piece of melody given below and use it to make the transposition instructed for Question 22.

22. Transpose to **C major** with all the necessary accidentals and the symbols as written.

SL 4

Part 6:

Musical Analysis

Study the piece of Music given below.

A Carol to the King

(SATB, piano)

Text by Sally DeFord

Music by Sally DeFord and Katherine Wright

Gently ♩ = 80

p freely

mp rit.

A tempo
p
(TB:) In the quiet on the hill-side Sheep and lambs a-sleep-ing_ lay; Shep-herds watch-ful

A tempo
p

14 *(mp TB:)*

Down the skies in
 'neath the star-light Kept them ere the com-ing day.

mp

19

sud - den glo - ry An - gels came a - sing - ing_ then_ For the ho - ly

A Carol to the King - 2

23. What is the given tempo of the music piece?

SL 1

24. There are two sets of notations for performance in this composition. What are they for?

SL 2

25. State the composers and the Lyricists names.

SL 2

26. Which two vocal parts sings the first nine (9) bars of the music? Elaborate on how you justify your two vocal parts.

SL 2

After your analysis of the above Music extract, evaluate and explain the **form** of the music, its **melody and rhythm**, its **harmony** and the **style** of composition.

27. **Form:**

SL 3

STUDENT EDUCATION NUMBER									

SSLC MUSIC

2023

(For Scorer only)

STRANDS		Weighting	Scores	Check Scorer	AED check
STRAND 1	GENERAL KNOWLEDGE	40			
STRAND 2	COMPOSITION	40			
STRAND 3	HISTORY	20			
TOTAL		100			