



Ministry of Education, Sports and Culture

**EDUCATION
STATISTICAL DIGEST**

2011

SAMOA

Introduction

The Statistical Digest provides a range of statistics and performance measures related to school education in Samoa.

The information included in the digest is the latest information that is available as of May 2011. Historical data has also been included to reflect changes over time.

The Digest is divided into two parts:

- Part 1 – Data from School Census Information System
- Part 2 – Data from sources other than the School Census Information System

Part 1

Data from School Census Information System

The Annual School Census data collection held on 3rd March 2011, is a major source of statistical information. The census data is stored in the Ministry's school census information system called Manumea. The school census information system includes a series of reports, which can be automatically produced. These reports are contained in Part 1 of the Statistical Digest.

Part 2

Data from sources other than the School Census Information System

The Ministry of Education, Sports and Culture's performance measure framework includes a range of indicators that are not automatically produced from the School Census Information System. Data has been assembled from a range of sources such as examination results and personnel information. This information is contained in Part 2 of the Statistical Digest.

Statistical Digest produced by:
Policy, Planning and Research Division
Ministry of Education Sports & Culture
Samoa
Phone: 64600
Fax: 64664
Email: samoamesc@lesamoa.net

July 2011

Table of Contents for Part 1 – Data from School Census Information System

Number of schools by school type and district, 2011.....	1
Size of government schools by district, 2011.....	2
School enrolments by level, gender and status, 2011.....	3
School enrolments for all schools, 2002 – 2011.....	4
School enrolment for government schools, 2002 – 2011.....	4
Percentage enrolments in government schools, 2002 – 2011.....	5
Male school enrolments, all schools, 2002 – 2011.....	6
Percentage male enrolments, all schools, 2002 – 2011.....	6
School enrolments by district and maximum level provided, 2011.....	7
Number of repeaters by level in 2011.....	8
Repeaters in all schools by level, 2002 – 2011.....	8
Percentage of repeaters in all schools by level, 2002 – 2011.....	9
Transition rates by year level, 2002 – 2011.....	10
Drop out rates (percentage) by year level, 1995 – 2011.....	11
Number of teachers by school type and district, 2011.....	12
Student-Teacher ratio by school type and district, 2011.....	13
Student-Teacher ratio by level, government schools, 2002 - 2011.....	14
Number of student absent on Census day (3 rd March 2011).....	15
Number of government secondary schools teaching curriculum subjects by level.....	16
Primary school facilities by Controlling Authority, 2011.....	17
Secondary school facilities by Controlling Authority, 2011.....	17

Table of Contents for Part 2 – Data from sources other than School Census Information System

Average raw score at National Year 8 Examinations.....	1
Number of students sitting Year 8 Examinations.....	1
Percentage of Year 8 students that sat the Year 8 Examinations.....	1
Percentage of Year 8 students that pass the Year 8 Examination.....	1
Average raw score at National Year 12 Examinations.....	2
Number of students sitting National Year 12 Examinations.....	2
Percentage of Year 12 students that pass the Year 12 Examinations.....	2
Primary students identified as at Risk, Year 4, All Schools (Government and Non-Government).....	3
Primary students identified as at Risk, Year 6, Government Schools.....	4
National Age Participation Rates.....	5
No. of Government schools that are meeting the national standards for primary student-teacher ratio of 1 teacher to 30 students (1:30).....	6
No. of Government schools that are meeting the national standards for secondary student-teacher ratio of 1 teacher to 20 students (1:20).....	6
Apparent Retention Rate for all schools.....	7
Students commencing first year of tertiary studies.....	7
Transition Rate from Year 13 to identified tertiary education.....	7

Definitions

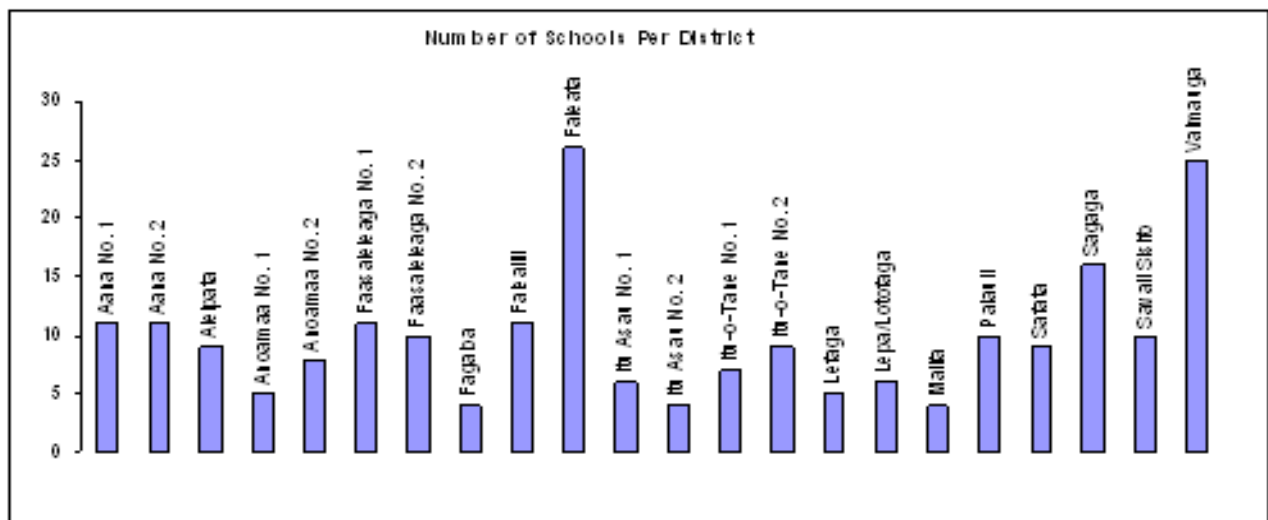
<i>Apparent Retention Rate</i>	compares the number of students in a given year with the size of the cohort. For example, the apparent retention rate of Years 9-12 for 2011 is calculated as the number of students in year 12 in 2011 divided by the number of students in year 9 in 2008.
<i>Completion Rates</i>	the percentage of students sitting the national exams is a measure of completion rates, e.g. percentage of students sitting year 8 exam is a measure of how many students starting year 8 actually complete year 8.
<i>Drop-out Rate</i>	The percentage of students who neither progressed from one level to the next or repeat the level.
<i>Pri-Sec (Primary-Secondary)</i>	A school that provides both primary and secondary levels, e.g. Paul V1 College has Year 7 & 8 levels. It should be noted that Robert Louis Stevenson School is counted as two schools because of their physical locations.
<i>SPELL Test</i>	A test taken by all year 4 and year 6 students in Government schools. Most Non-Government schools also participate, but it is not compulsory. It provides an indication of the students whose learning outcomes are identified as being at risk so that they receive attention from teachers in their reading and numeracy programmes.
<i>Student Teacher Ratio</i>	is calculated as the number of students at a school divided by the total number of teachers (including Principals) at the school. Data is from Annual School Census.
<i>Transitional Rate</i>	is the percentage of students who complete one level and move on to the immediate level. For example, the transitional rate into Post-Secondary studies is the number of students who commenced post-secondary education in 2011 (Institute of Higher Education, Institute of Technology) as a percentage of the students who were in Year 13 in 2010.

Part 1 – Data from School Census

*Produced using Manumea, the School Census
Information System*

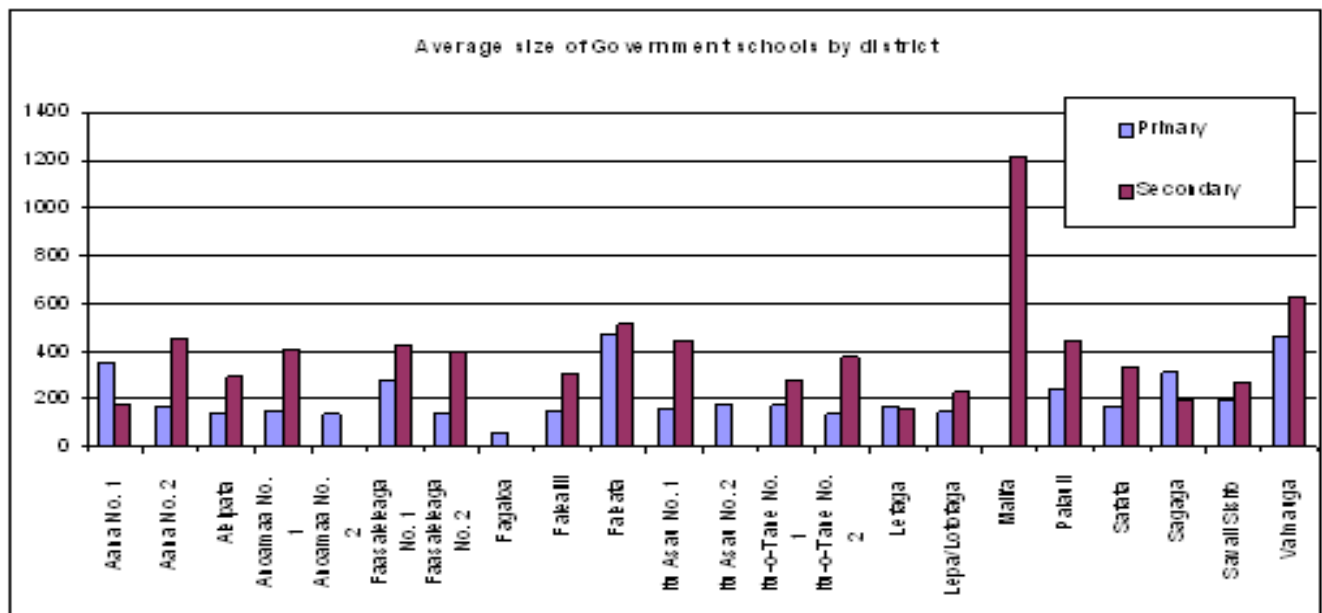
Number of schools by school type and district, 2011

Region/District	Government				Mission				Private				Grand Total
	Primary	Pri-Sec	Secondary	Total	Primary	Pri-Sec	Secondary	Total	Primary	Pri-Sec	Secondary	Total	
Apia Urban													
Faleata	10		1	11	1	1	3	5	4	2	1	7	23
Malifa			1	1									1
Valmauga	11		3	14	3	1	3	7	2			2	23
Apia Urban Total	21		5	26	4	2	6	12	6	2	1	9	47
Rest of Upolu													
Aana No. 1	7		1	8	1	1	1	3					11
Aana No. 2	10		1	11									11
Aleipata	8		1	9									9
Anoamaa No. 1	4		1	5									5
Anoamaa No. 2	6			6	2			2					8
Fagaloa	4			4									4
Falea III	9		2	11									11
Lefaga	4		1	5									5
Lepa/Lotofaga	5		1	6									6
Safata	8		1	9									9
Sagaga	8		1	9	3		2	5					14
Rest of Upolu Total	73		10	83	6	1	3	10					93
Savali													
Faasaleleaga No. 1	6		1	7	2		1	3					10
Faasaleleaga No. 2	6		1	7	2	1		3					10
Itu Asau No. 1	5		1	6									6
Itu Asau No. 2	4			4									4
Itu-o-Tane No. 1	5		2	7									7
Itu-o-Tane No. 2	7		1	8		1		1					9
Palauli	7		1	8			1	1					9
Savali Sisiifo	8		2	10									10
Savali Total	48		9	57	4	2	2	8					65
Grand Total	142		24	166	14	5	11	30	6	2	1	9	205



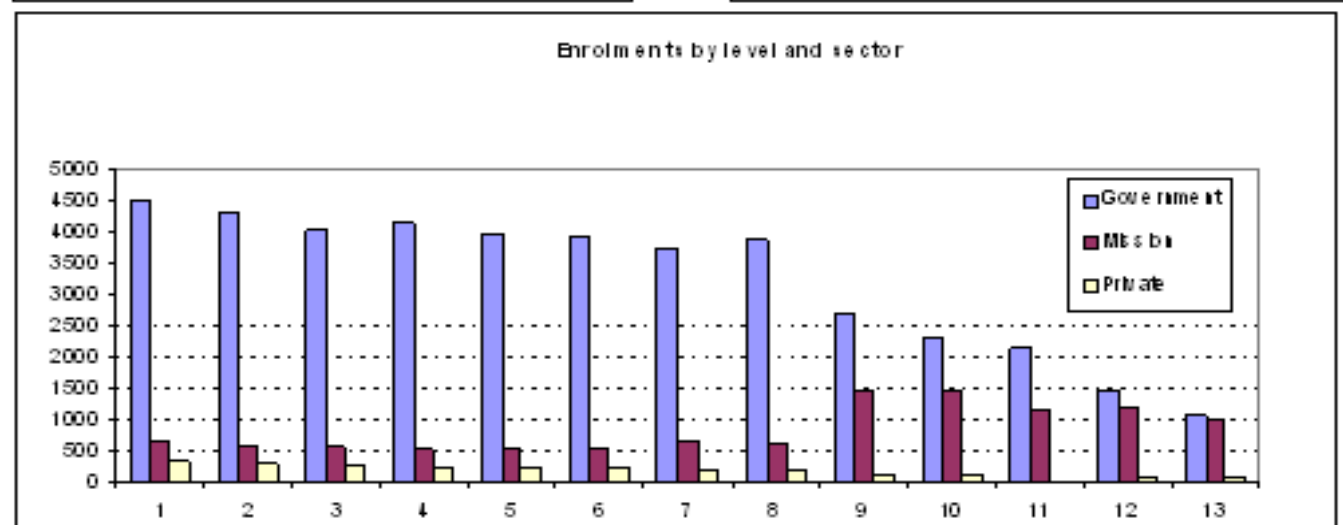
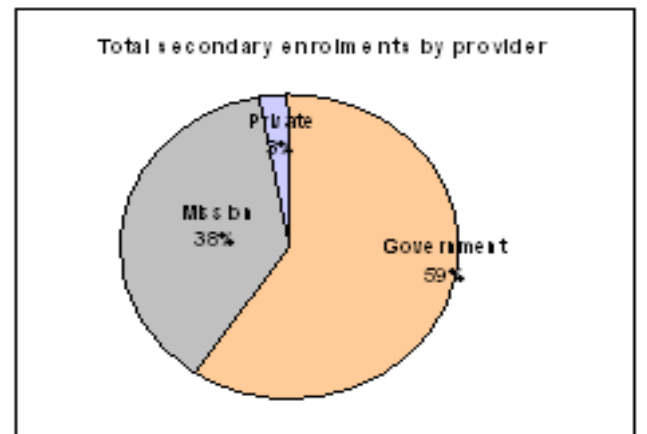
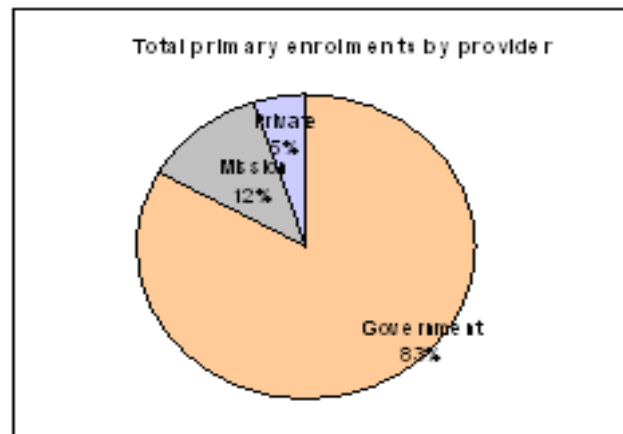
Size of Government schools by district, 2011

Region/District	Primary Schools				Secondary Schools			
	Number	Average Size	Minimum Size	Maximum Size	Number	Average Size	Minimum Size	Maximum Size
Apia Urban								
Faleata	10	472	190	937	1	517	517	517
Malifa					1	1214	1214	1214
Valmauga	11	462	263	1372	3	629	414	806
Apia Urban Total	21	467	190	1372	5	724	414	1214
Rest of Upolu								
Aana No. 1	7	354	180	636	1	171	171	171
Aana No. 2	10	167	69	288	1	450	450	450
Aleipata	8	140	58	190	1	291	291	291
Anomaa No. 1	4	150	123	218	1	408	408	408
Anomaa No. 2	6	136	44	290				
Fagaloa	4	64	53	82				
Falealili	9	154	55	403	2	306	227	385
Lefaga	4	168	69	298	1	161	161	161
Lepa/Lotofaga	5	144	106	202	1	233	233	233
Safata	8	168	66	271	1	333	333	333
Sagaga	8	312	180	401	1	195	195	195
Rest of Upolu Total	73	186	44	636	10	265	161	450
Savali								
Faasaleleaga No. 1	6	276	142	491	1	426	426	426
Faasaleleaga No. 2	6	139	53	221	1	398	398	398
Itu Asau No. 1	5	158	97	235	1	444	444	444
Itu Asau No. 2	4	182	107	272				
Itu-o-Tane No. 1	5	175	131	216	2	280	207	353
Itu-o-Tane No. 2	7	143	61	234	1	377	377	377
Palauli	7	241	117	495	1	447	447	447
Savali Sififo	8	196	143	327	2	275	261	289
Savali Total	48	190	53	495	9	356	207	447
Grand Total	142	229	44	1372	24	403	161	1214



School enrolments by level, gender and status, 2011

Level	Government			Mission			Private			All Schools		
	Males	Females	Total	Males	Females	Total	Males	Females	Total	Males	Females	Total
1	2,310	2,177	4,487	284	377	661	181	141	322	2,775	2,695	5,470
2	2,211	2,088	4,299	255	309	564	140	166	306	2,606	2,563	5,169
3	2,139	1,879	4,018	249	306	555	151	125	276	2,539	2,310	4,849
4	2,174	1,969	4,143	253	274	527	133	105	238	2,560	2,348	4,908
5	2,101	1,859	3,960	258	284	542	133	100	233	2,492	2,243	4,735
6	2,014	1,941	3,955	260	283	543	107	124	231	2,381	2,348	4,729
7	1,983	1,753	3,736	312	321	633	105	97	202	2,400	2,171	4,571
8	2,091	1,804	3,895	297	326	623	80	85	165	2,468	2,215	4,683
Primary Total	17,023	15,470	32,493	2,168	2,480	4,648	1,030	943	1,973	20,221	18,893	39,114
9	1,399	1,289	2,688	692	772	1,464	69	63	132	2,160	2,124	4,284
10	1,161	1,146	2,307	641	824	1,465	45	68	113	1,847	2,038	3,885
11	968	1,185	2,153	517	628	1,145	0	0	0	1,485	1,813	3,298
12	691	787	1,478	553	641	1,194	50	48	98	1,294	1,476	2,770
13	462	587	1,049	425	573	998	43	59	102	930	1,219	2,149
Secondary Total	4,681	4,994	9,675	2,828	3,438	6,266	207	238	445	7,716	8,670	16,386
Grand Total	21,704	20,464	42,168	4,996	5,918	10,914	1,237	1,181	2,418	27,937	27,563	55,500

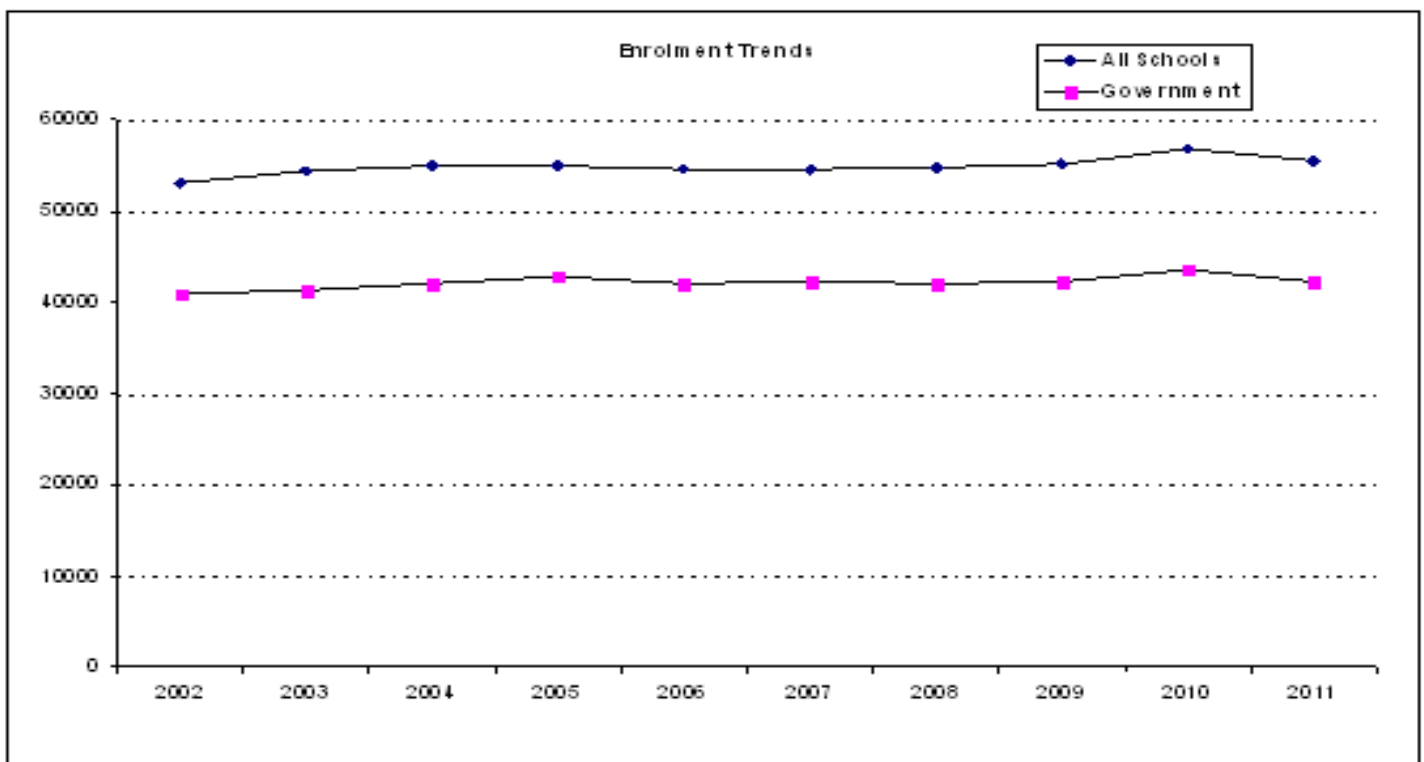


School enrolments for all schools

Year	Primary									Secondary						TOTAL	% Increase
	1	2	3	4	5	6	7	8	Total	9	10	11	12	13	Total		
2002	5,987	5,172	5,112	4,982	4,757	4,520	4,167	4,241	38,938	3,719	3,306	2,859	2,820	1,420	14,124	53,062	
2003	5,893	5,424	5,119	5,104	4,769	4,750	4,390	4,190	39,639	3,729	3,563	3,038	2,881	1,616	14,827	54,466	3
2004	5,704	5,257	5,383	5,134	5,045	4,652	4,620	4,378	40,173	3,673	3,357	3,152	2,822	1,752	14,756	54,929	1
2005	5,471	5,130	5,153	5,248	5,041	4,921	4,591	4,519	40,074	3,876	3,355	2,973	3,101	1,584	14,889	54,963	0
2006	5,407	4,867	4,895	5,099	5,146	4,835	4,810	4,461	39,520	4,020	3,531	2,892	2,916	1,756	15,115	54,635	-1
2007	5,273	4,930	4,855	4,922	5,066	5,032	4,789	4,601	39,468	4,028	3,649	2,964	2,909	1,652	15,202	54,670	0
2008	5,239	4,919	4,895	4,955	4,789	4,969	4,906	4,704	39,376	4,100	3,684	3,019	2,863	1,657	15,323	54,699	0
2009	5,263	4,830	4,983	4,925	4,899	4,763	4,896	4,820	39,379	4,274	3,736	3,108	2,926	1,669	15,713	55,092	1
2010	6,086	5,106	4,970	4,953	4,914	4,842	4,842	4,887	40,600	4,401	3,844	3,241	2,930	1,853	16,269	56,869	3
2011	5,470	5,169	4,849	4,908	4,735	4,729	4,571	4,683	39,114	4,284	3,885	3,298	2,770	2,149	16,386	55,500	-2

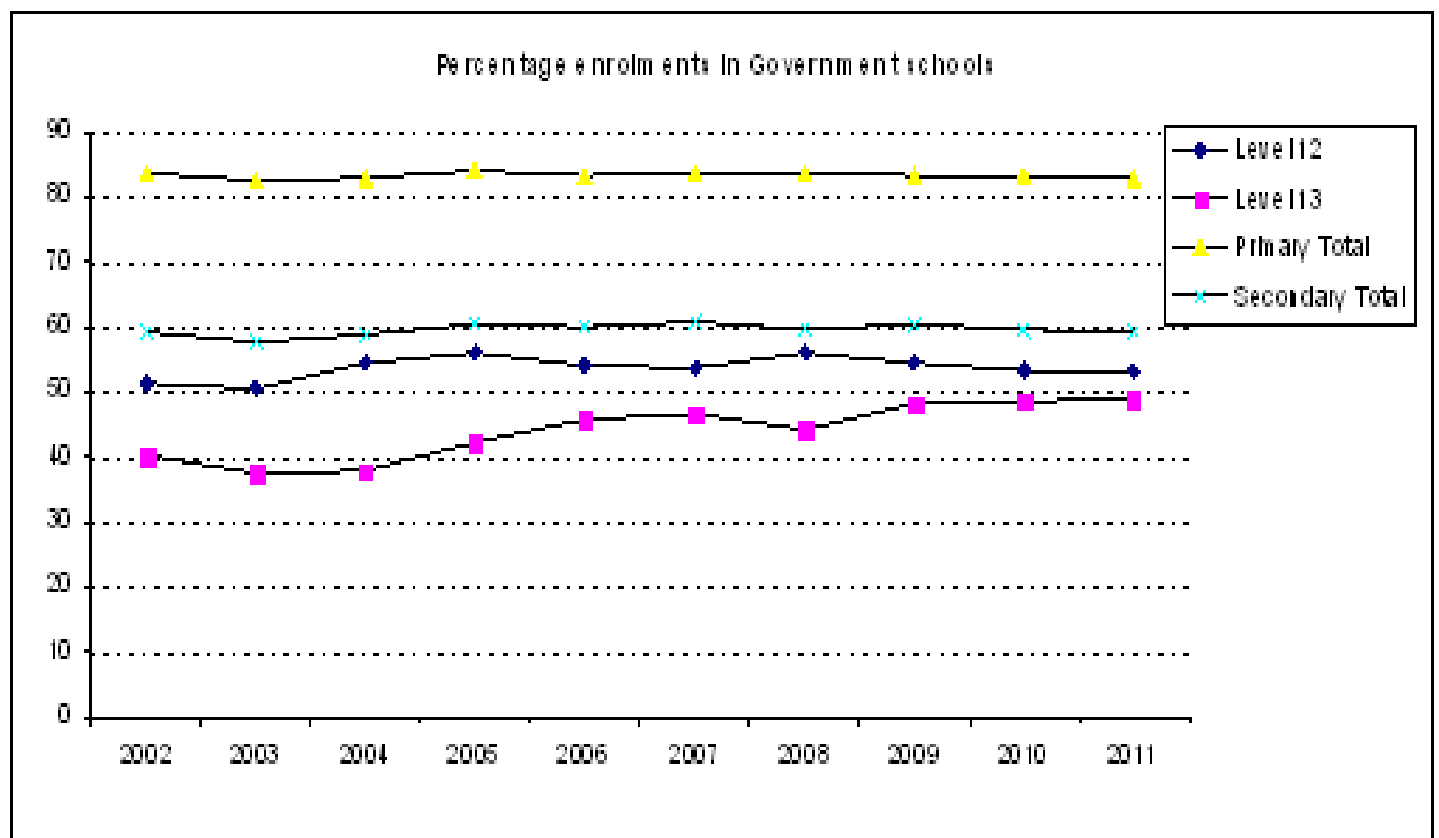
School enrolments for Government schools

Year	Primary									Secondary						TOTAL	% Increase
	1	2	3	4	5	6	7	8	Total	9	10	11	12	13	Total		
2002	5,029	4,330	4,242	4,163	4,009	3,780	3,498	3,572	32,623	2,386	2,102	1,851	1,449	571	8,359	40,982	
2003	4,899	4,440	4,202	4,163	3,905	3,961	3,655	3,479	32,704	2,359	2,215	1,900	1,458	606	8,538	41,242	1
2004	4,718	4,384	4,461	4,258	4,188	3,875	3,802	3,620	33,306	2,334	2,141	2,022	1,533	663	8,693	41,999	2
2005	4,561	4,283	4,356	4,437	4,292	4,160	3,849	3,781	33,719	2,519	2,152	1,930	1,738	671	9,010	42,729	2
2006	4,481	3,974	4,081	4,305	4,338	4,105	3,984	3,702	32,970	2,487	2,235	1,962	1,577	806	9,067	42,037	-2
2007	4,372	4,085	4,026	4,135	4,299	4,299	3,994	3,811	33,021	2,533	2,304	2,064	1,556	771	9,228	42,249	1
2008	4,364	4,077	4,071	4,106	3,996	4,217	4,129	3,955	32,915	2,534	2,273	2,000	1,607	731	9,145	42,060	0
2009	4,325	4,009	4,146	4,102	4,036	4,008	4,106	4,052	32,784	2,765	2,292	2,052	1,593	802	9,504	42,288	1
2010	5,012	4,214	4,155	4,149	4,091	4,044	4,042	4,096	33,803	2,714	2,482	2,036	1,561	897	9,690	43,493	3
2011	4,487	4,299	4,018	4,143	3,960	3,955	3,736	3,895	32,493	2,688	2,307	2,153	1,478	1,049	9,675	42,168	-3



Percentage enrolments in Government schools

Year	Primary									Secondary						TOTAL
	1	2	3	4	5	6	7	8	Total	9	10	11	12	13	Total	
2002	84.0	83.7	83.0	83.6	84.3	83.6	83.9	84.2	83.8	64.2	63.6	64.7	51.4	40.2	59.2	77.2
2003	83.1	81.9	82.1	81.6	81.9	83.4	83.3	83.0	82.5	63.3	62.2	62.5	50.6	37.5	57.6	75.7
2004	82.7	83.4	82.9	82.9	83.0	83.3	82.3	82.7	82.9	63.5	63.8	64.1	54.3	37.8	58.9	76.5
2005	83.4	83.5	84.5	84.5	85.1	84.5	83.8	83.7	84.1	65.0	64.1	64.9	56.0	42.4	60.5	77.7
2006	82.9	81.7	83.4	84.4	84.3	84.9	82.8	83.0	83.4	61.9	63.3	67.8	54.1	45.9	60.0	76.9
2007	82.9	82.9	82.9	84.0	84.9	85.4	83.4	82.8	83.7	62.9	63.1	69.6	53.5	46.7	60.7	77.3
2008	83.3	82.9	83.2	82.9	83.4	84.9	84.2	84.1	83.6	61.8	61.7	66.2	56.1	44.1	59.7	76.9
2009	82.2	83.0	83.2	83.3	82.4	84.1	83.9	84.1	83.3	64.7	61.3	66.0	54.4	48.1	60.5	76.8
2010	82.4	82.5	83.6	83.8	83.3	83.5	83.5	83.8	83.3	61.7	64.6	62.8	53.3	48.4	59.6	76.5
2011	82.0	83.2	82.9	84.4	83.6	83.6	81.7	83.2	83.1	62.7	59.4	65.3	53.4	48.8	59.0	76.0

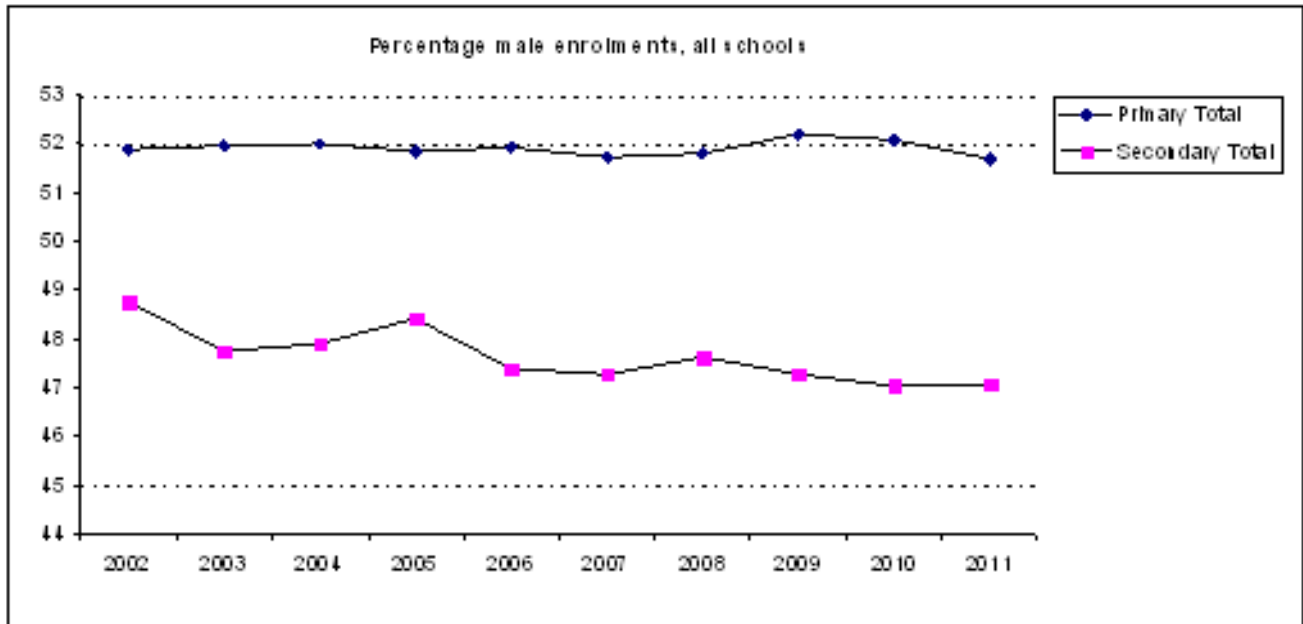


Male school enrolments, all schools

Year	Primary									Secondary						TOTAL	% increase
	1	2	3	4	5	6	7	8	Total	9	10	11	12	13	Total		
2002	3,105	2,634	2,684	2,587	2,531	2,345	2,149	2,178	20,213	1,890	1,620	1,439	1,323	618	6,890	27,103	
2003	3,111	2,833	2,606	2,678	2,440	2,531	2,261	2,144	20,604	1,837	1,728	1,469	1,338	705	7,077	27,681	2
2004	2,974	2,776	2,832	2,629	2,638	2,373	2,436	2,237	20,895	1,840	1,598	1,548	1,319	766	7,071	27,966	1
2005	2,883	2,696	2,708	2,735	2,556	2,559	2,323	2,322	20,782	1,989	1,660	1,401	1,435	727	7,212	27,994	0
2006	2,821	2,533	2,596	2,690	2,701	2,438	2,460	2,283	20,522	2,002	1,731	1,341	1,349	739	7,162	27,684	-1
2007	2,779	2,512	2,510	2,614	2,617	2,622	2,424	2,337	20,415	1,987	1,792	1,367	1,364	676	7,186	27,601	0
2008	2,748	2,556	2,513	2,571	2,506	2,596	2,531	2,375	20,396	2,024	1,797	1,373	1,387	719	7,300	27,696	0
2009	2,757	2,566	2,640	2,508	2,536	2,562	2,505	2,484	20,558	2,134	1,779	1,469	1,305	739	7,426	27,984	1
2010	3,120	2,671	2,594	2,610	2,500	2,522	2,597	2,529	21,143	2,234	1,817	1,552	1,300	750	7,653	28,796	3
2011	2,775	2,606	2,539	2,560	2,492	2,381	2,400	2,468	20,221	2,160	1,847	1,485	1,294	930	7,716	27,937	-3

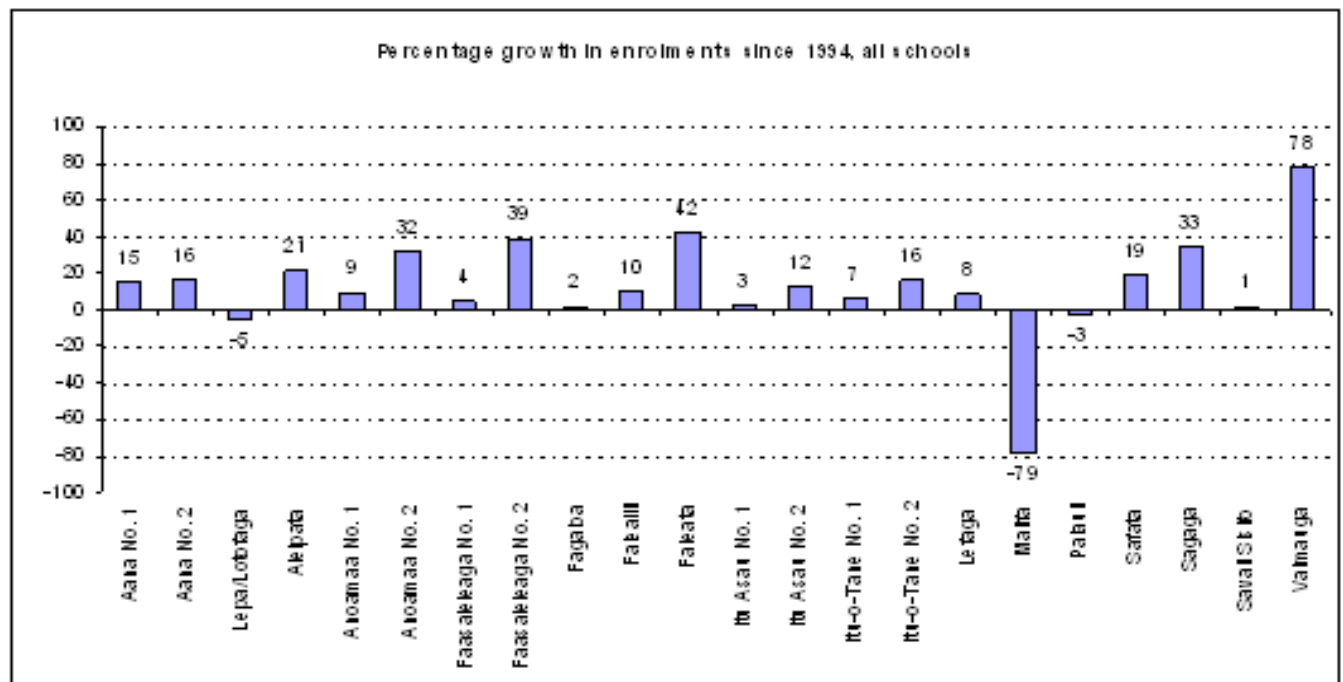
Percentage male enrolments, all schools

Year	Primary									Secondary						TOTAL
	1	2	3	4	5	6	7	8	Total	9	10	11	12	13	Total	
2002	51.9	50.9	52.5	51.9	53.2	51.9	51.6	51.4	51.9	50.8	49.0	50.3	46.9	43.5	48.8	51.1
2003	52.8	52.2	50.9	52.5	51.2	53.3	51.5	51.2	52.0	49.3	48.5	48.4	46.4	43.6	47.7	50.8
2004	52.1	52.8	52.6	51.2	52.3	51.0	52.7	51.1	52.0	50.1	47.6	49.1	46.7	43.7	47.9	50.9
2005	52.7	52.6	52.6	52.1	50.7	52.0	50.6	51.4	51.9	51.3	49.5	47.1	46.3	45.9	48.4	50.9
2006	52.2	52.0	53.0	52.8	52.5	50.4	51.1	51.2	51.9	49.8	49.0	46.4	46.3	42.1	47.4	50.7
2007	52.7	51.0	51.7	53.1	51.7	52.1	50.6	50.8	51.7	49.3	49.1	46.1	46.9	40.9	47.3	50.5
2008	52.5	52.0	51.3	51.9	52.3	52.2	51.6	50.5	51.8	49.4	48.8	45.5	48.4	43.4	47.6	50.6
2009	52.4	53.1	53.0	50.9	51.8	53.8	51.2	51.5	52.2	49.9	47.6	47.3	44.6	44.3	47.3	50.8
2010	51.3	52.3	52.2	52.7	50.9	52.1	53.6	51.7	52.1	50.8	47.3	47.9	44.4	40.5	47.0	50.6
2011	50.7	50.4	52.4	52.2	52.6	50.3	52.5	52.7	51.7	50.4	47.5	45.0	46.7	43.3	47.1	50.3



School enrolments by district and maximum level provided, 2011

Region/District	Primary Enrolments, all schools			Secondary enrolments, all schools			Max level in 1994		Max level in 2011	
	1994	2011	% Increase	1994	2011	% Increase	Govt	Non-Govt	Govt	Non-Govt
Faleata	4202	6625	58	2409	2754	14	11	13	13	13
Malifa	4223			1471	1214	-17	12		13	
Valmauga	4142	7652	85	1990	3240	63	13	13	13	13
Apia Urban Total	12567	14277	14	5870	7208	23	13	13	13	13
Aana No. 1	2303	2674	16	760	842	11	11	12	12	13
Aana No. 2	1600	1669	4	227	450	98	11		13	
Aleipata	915	1118	22	246	291	18	11		12	
Anoamaa No. 1	767	600	-22	156	408	162	11		13	
Anoamaa No. 2	936	1234	32				8	8	8	8
Fagaloa	252	256	2				8		8	
Falea III	1472	1388	-6	342	612	79	11		13	
Lefaga	656	671	2	113	161	42	11		12	
Lepai/Lotofaga	795	722	-9	213	233	9	11		13	
Safata	1235	1342	9	171	333	95	11		12	
Sagaga	2433	3363	38	1315	1634	24	11	13	12	13
Rest of Upolu Total	13364	15037	13	3543	4964	40	11	13	13	13
Faasaleleaga No. 1	1795	1925	7	765	740	-3	11	13	13	13
Faasaleleaga No. 2	846	1105	31	447	692	55	11	13	13	13
Itu Asau No. 1	983	788	-20	217	444	105	11		13	
Itu Asau No. 2	652	729	12				8		8	
Itu-o-Tane No. 1	839	875	4	505	560	11	13		13	
Itu-o-Tane No. 2	1101	1126	2	217	406	87	11		12	9
Palauli	1818	1687	-7	771	822	7	11	13	13	13
Savali Silefo	1764	1565	-11	326	550	69	11		13	
Savali Total	9798	9800	0	3248	4214	30	13	13	13	13
Grand Total	35729	39114	9	12661	16386	29	13	13	13	13

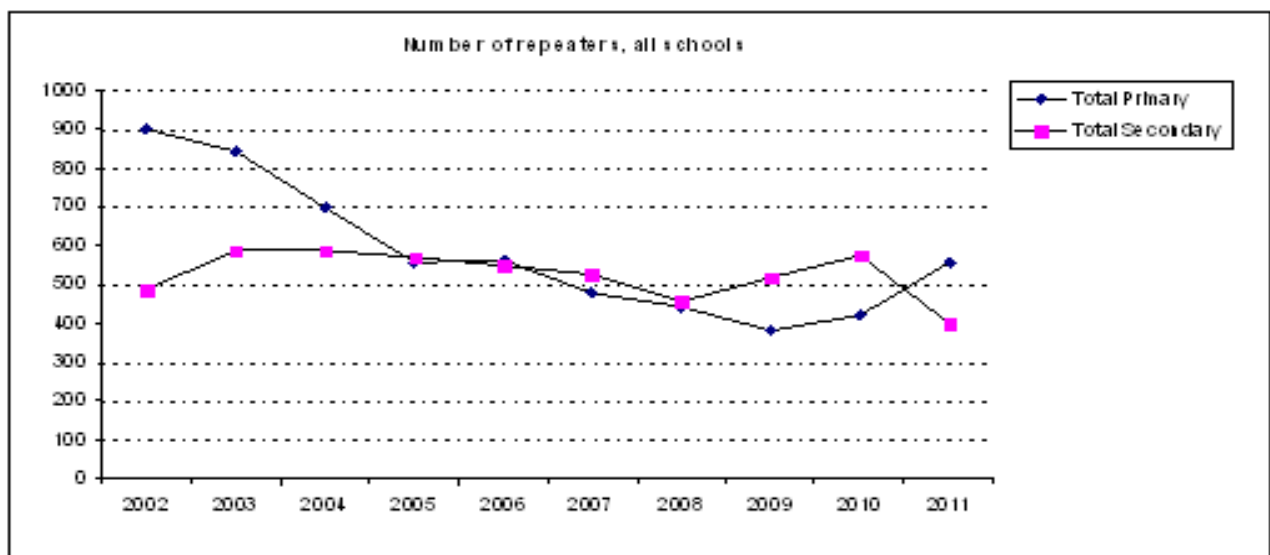


Number of repeaters by level in 2011

Level	Number of Repeaters				Percentage of Enrolment			
	Government	Mission	Private	Total	Government	Mission	Private	Total
1	269	27	6	302	6.0	4.1	1.9	5.5
2	25	11	4	40	0.6	2.0	1.3	0.8
3	12	7	8	27	0.3	1.3	2.9	0.6
4	14	15	4	33	0.3	2.8	1.7	0.7
5	23	8	5	36	0.6	1.5	2.1	0.8
6	20	11	0	31	0.5	2.0	0.0	0.7
7	16	10	1	27	0.4	1.6	0.5	0.6
8	41	19	1	61	1.1	3.0	0.6	1.3
Total Primary	420	108	29	557	1.3	2.3	1.5	1.4
9	55	6	0	61	2.0	0.4	0.0	1.4
10	37	8	2	47	1.6	0.5	1.8	1.2
11	127	23	0	150	5.9	2.0	0.0	4.5
12	32	33	0	65	2.2	2.8	0.0	2.3
13	26	50	2	78	2.5	5.0	2.0	3.6
Total Secondary	277	120	4	401	2.9	1.9	0.9	2.4
Total	697	228	33	958	1.7	2.1	1.4	1.7

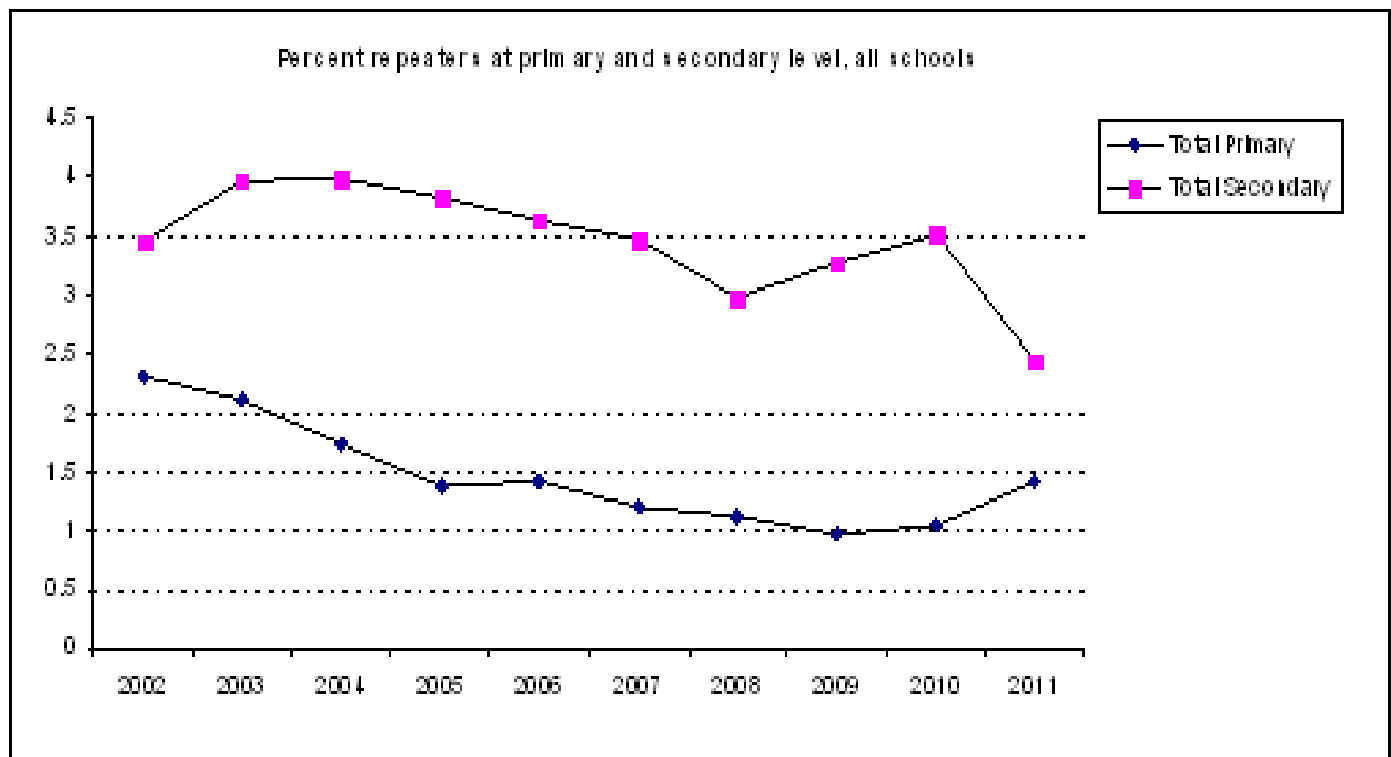
Repeaters in all schools by level

Year	Primary									Secondary						TOTAL
	1	2	3	4	5	6	7	8	Total	9	10	11	12	13	Total	
2002	306	88	69	83	66	47	53	188	900	20	12	87	258	112	489	1,389
2003	345	70	58	66	40	62	45	155	841	19	8	139	279	143	588	1,429
2004	234	69	51	55	63	43	33	148	696	9	32	112	339	96	588	1,284
2005	223	51	34	41	36	24	41	105	555	32	28	88	274	148	570	1,125
2006	206	51	46	44	31	25	28	130	561	24	25	176	204	120	549	1,110
2007	205	39	22	55	17	28	42	70	478	46	12	108	245	116	527	1,005
2008	126	43	39	62	26	50	38	61	445	23	27	113	185	109	457	902
2009	125	48	41	40	22	33	12	60	381	62	56	150	163	85	516	897
2010	139	31	37	24	28	32	43	87	421	100	66	144	160	103	573	994
2011	302	40	27	33	36	31	27	61	557	61	47	150	65	78	401	958



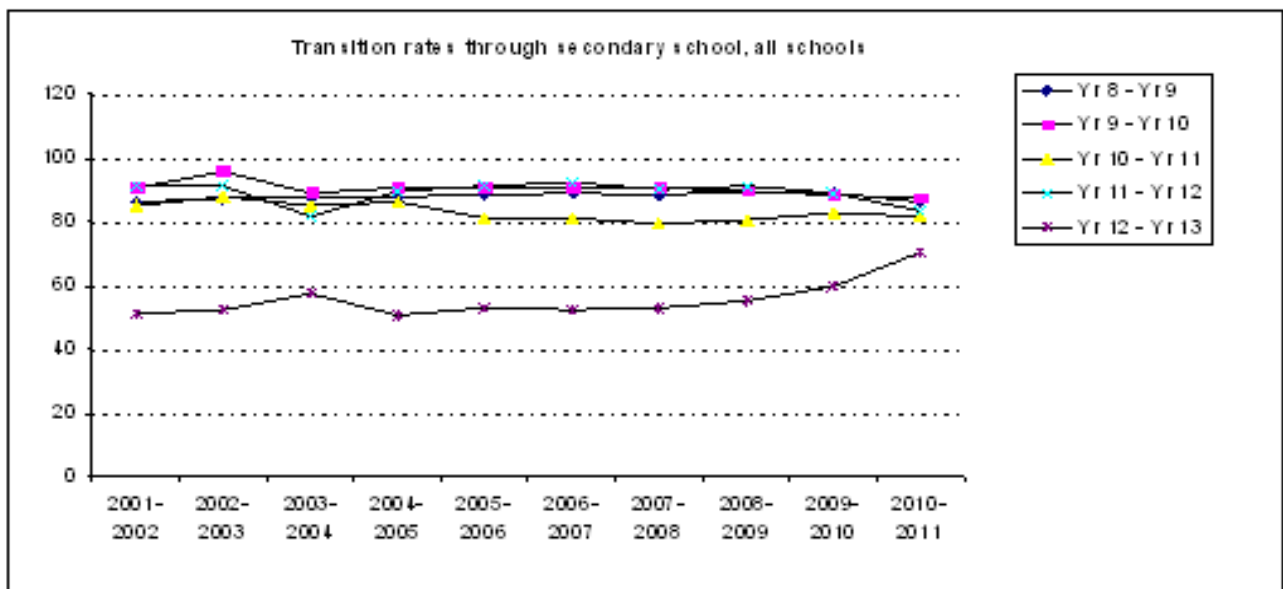
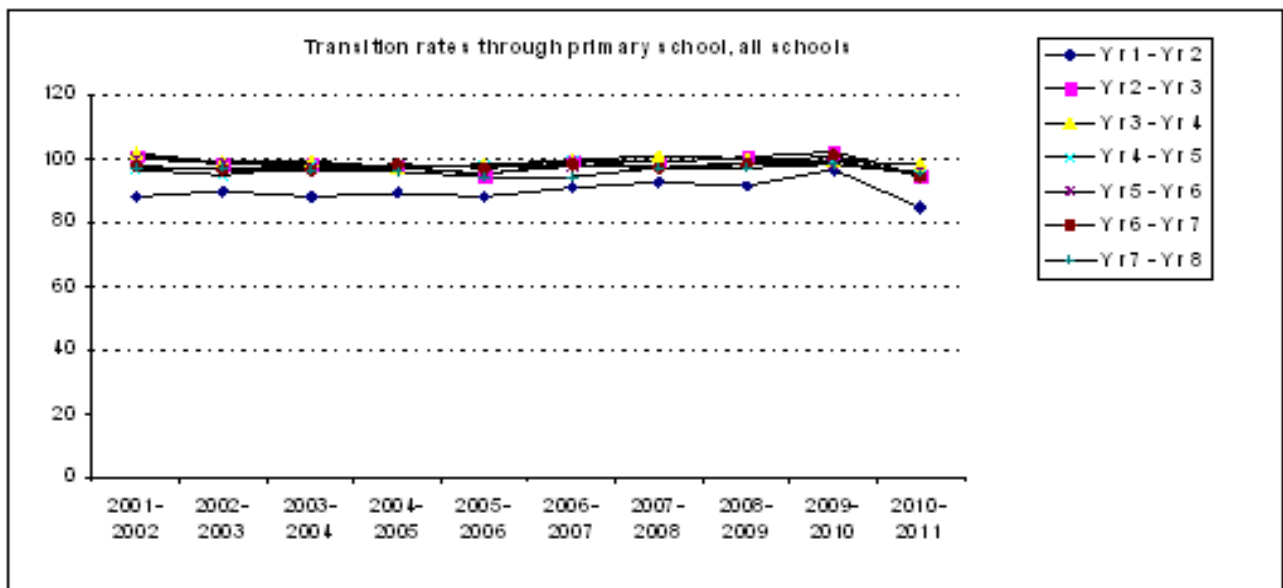
Percentage of repeaters in all schools by level

Year	Primary									Secondary						TOTAL
	1	2	3	4	5	6	7	8	Total	9	10	11	12	13	Total	
2002	5.1	1.7	1.3	1.7	1.4	1.0	1.3	4.4	2.3	0.5	0.4	3.0	9.1	7.9	3.5	2.6
2003	5.9	1.3	1.1	1.3	0.8	1.3	1.0	3.7	2.1	0.5	0.2	4.6	9.7	8.8	4.0	2.6
2004	4.1	1.3	0.9	1.1	1.2	0.9	0.7	3.4	1.7	0.2	1.0	3.6	12.0	5.5	4.0	2.3
2005	4.1	1.0	0.7	0.8	0.7	0.5	0.9	2.3	1.4	0.8	0.8	3.0	8.8	9.3	3.8	2.0
2006	3.8	1.0	0.9	0.9	0.6	0.5	0.6	2.9	1.4	0.6	0.7	6.1	7.0	6.8	3.6	2.0
2007	3.9	0.8	0.5	1.1	0.3	0.6	0.9	1.5	1.2	1.1	0.3	3.6	8.4	7.0	3.5	1.8
2008	2.4	0.9	0.8	1.3	0.5	1.0	0.8	1.3	1.1	0.6	0.7	3.7	6.5	6.6	3.0	1.6
2009	2.4	1.0	0.8	0.8	0.4	0.7	0.2	1.2	1.0	1.5	1.5	4.8	5.6	5.1	3.3	1.6
2010	2.3	0.6	0.7	0.5	0.6	0.7	0.9	1.8	1.0	2.3	1.7	4.4	5.5	5.6	3.5	1.7
2011	5.5	0.8	0.6	0.7	0.8	0.7	0.6	1.3	1.4	1.4	1.2	4.5	2.3	3.6	2.4	1.7



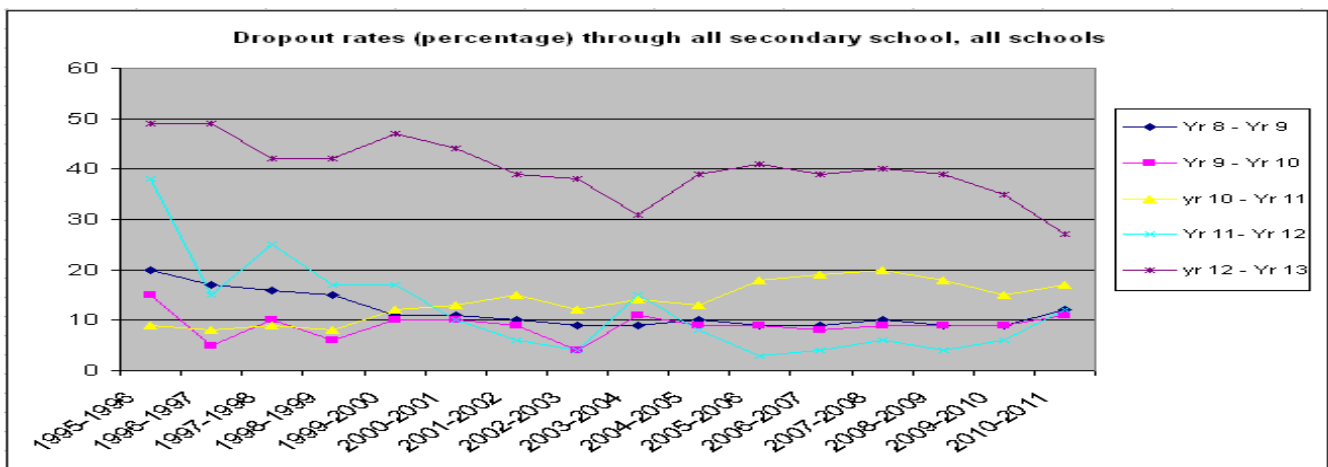
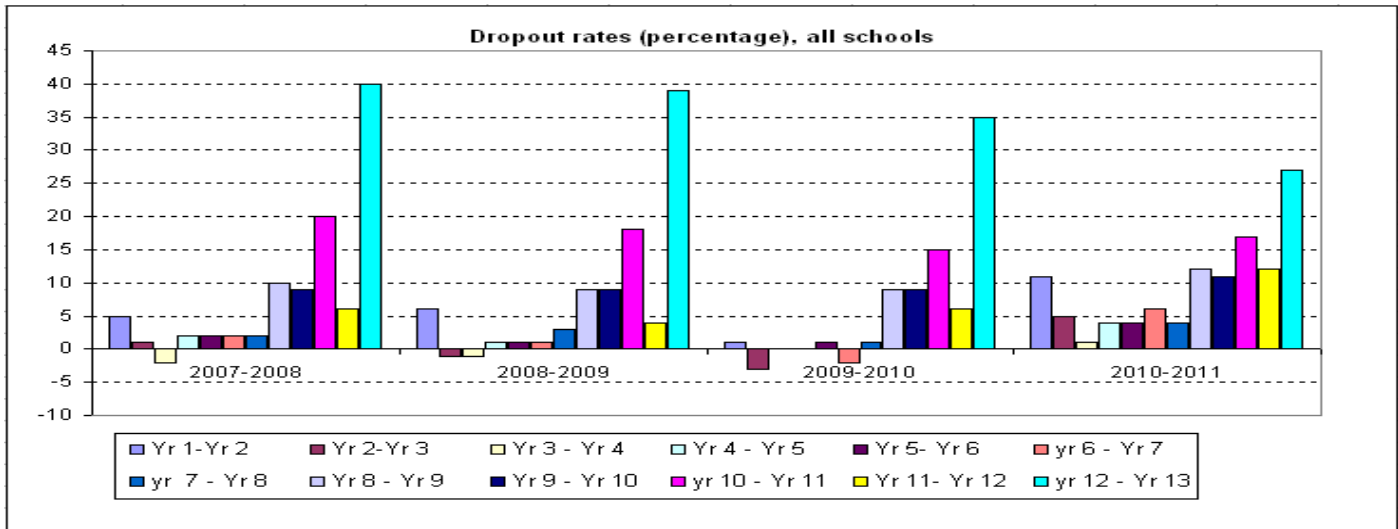
Transition rates by year level

Year	Year Levels											
	1-2	2-3	3-4	4-5	5-6	6-7	7-8	8-9	9-10	10-11	11-12	12-13
2001-2002	88	101	101	96	100	98	97	86	91	85	91	51
2002-2003	89	98	99	95	99	96	97	87	96	88	91	52
2003-2004	88	98	99	98	97	97	96	87	89	85	82	57
2004-2005	89	97	97	97	97	98	96	88	91	86	90	51
2005-2006	88	95	98	97	95	97	94	88	90	81	91	53
2006-2007	90	99	99	99	97	98	94	89	90	81	92	53
2007-2008	92	98	101	97	97	97	97	89	91	80	90	53
2008-2009	91	100	100	98	99	98	97	90	90	80	92	55
2009-2010	96	102	99	99	98	101	98	89	88	83	89	60
2010-2011	84	94	98	95	96	94	95	86	87	82	83	71



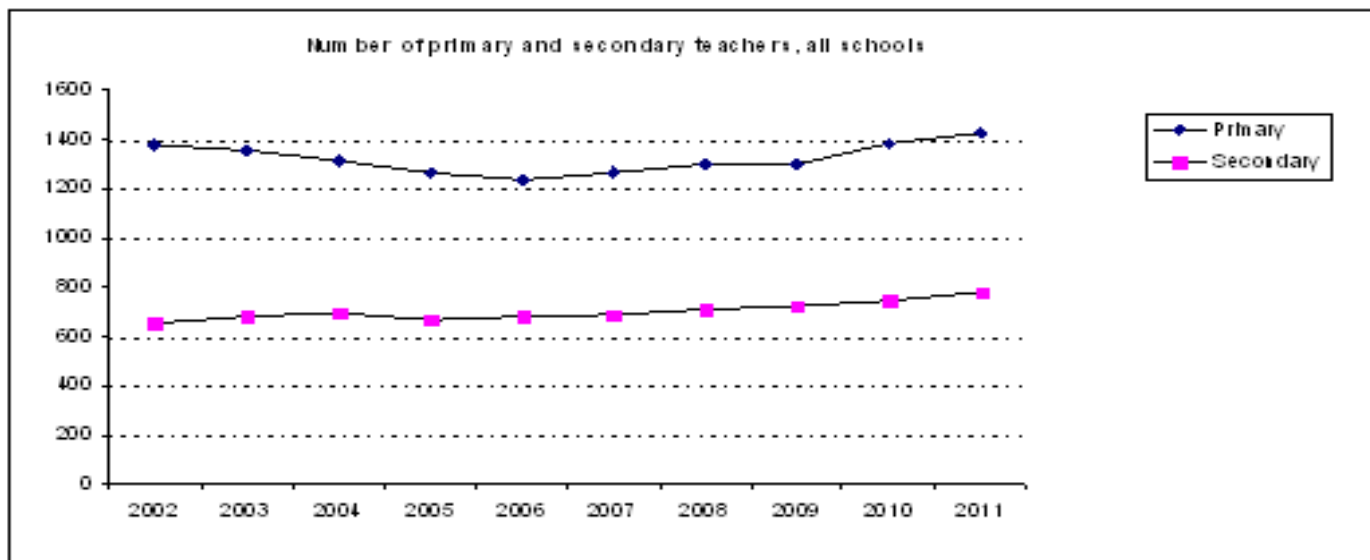
Dropout rates (percentage) by year level

Year	Year Levels											
	1-2	2-3	3-4	4-5	5-6	6-7	7-8	8-9	9-10	10-11	11-12	12-13
1994-1995	6	0	-1	1	-2	2	-2	16	9	5	39	42
1995-1996	9	1	0	3	5	4	-2	20	15	9	38	49
1996-1997	10	2	1	2	2	2	-6	17	5	8	15	49
1997-1998	9	1	0	5	1	5	-1	16	10	9	25	42
1998-1999	8	2	2	3	2	7	-1	15	6	8	17	42
1999-2000	6	-1	1	3	2	5	-3	11	10	12	17	47
2000-2001	5	1	0	1	-2	2	-6	11	10	13	10	44
2001-2002	7	-3	-3	2	-1	1	2	10	9	15	6	39
2002-2003	5	1	0	4	1	3	2	9	4	12	4	38
2003-2004	8	0	0	1	2	3	3	9	11	14	15	31
2004-2005	7	2	3	2	2	2	4	10	9	13	8	39
2005-2006	8	4	1	2	4	2	5	9	9	18	3	41
2006-2007	6	0	0	0	2	1	5	9	8	19	4	39
2007-2008	5	1	-2	2	2	2	2	10	9	20	6	40
2008-2009	6	-1	-1	1	1	1	3	9	9	18	4	39
2009-2010	1	-3	0	0	1	-1	1	9	9	15	6	35
2010-2011	11	5	1	4	4	6	4	12	11	17	12	27



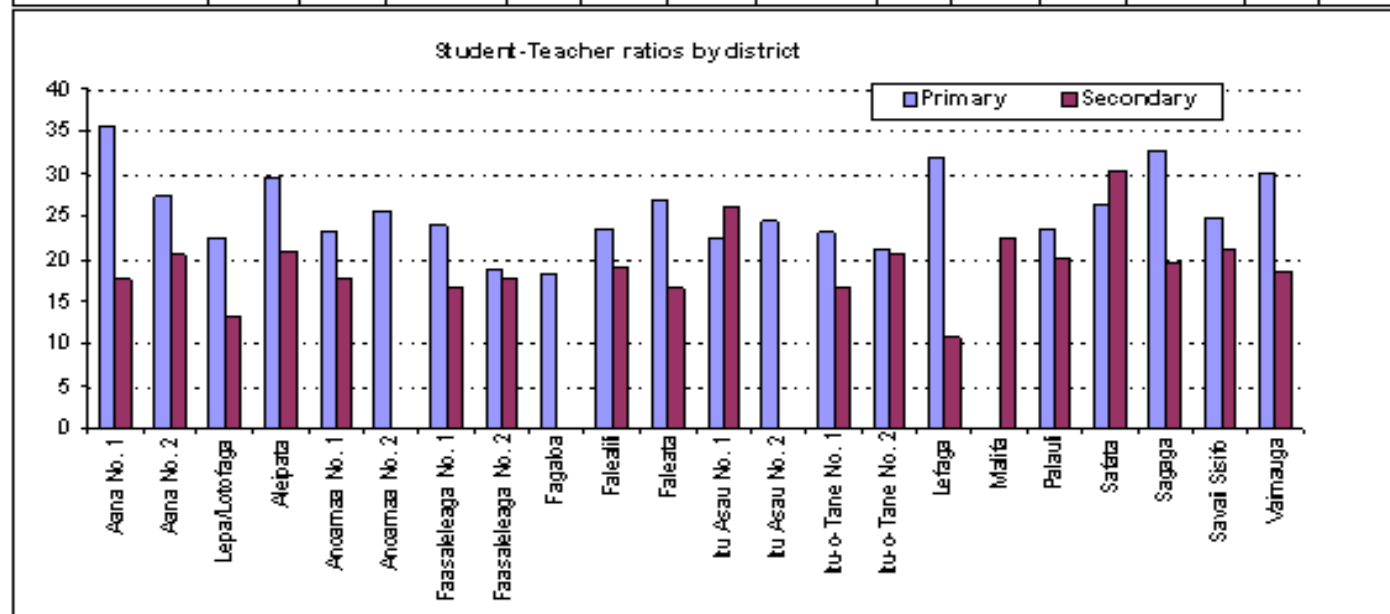
Number of teachers by school type and district, 2011

Region/District	Government				Mission				Private				TOTAL
	Primary	Pri-Sec	Second.	Total	Primary	Pri-Sec	Second.	Total	Primary	Pri-Sec	Second.	Total	
Apia Urban													
Faleata	147		34	181	13	48	49	110	73	42	14	129	420
Malifa			54	54									54
Valmauga	150		113	263	57	19	62	138	38			38	439
Apia Urban Total	297		201	498	70	67	111	248	111	42	14	167	913
Rest of Upolu													
Aana No. 1	61		17	78	13	10	23	46					124
Aana No. 2	61		22	83									83
Aleipata	38		14	52									52
Anoamaa No. 1	26		23	49									49
Anoamaa No. 2	33			33	15			15					48
Fagaloa	14			14									14
Falea III	59		32	91									91
Lefaga	21		15	36									36
Lepa/Lotofaga	32		18	50									50
Safata	51		11	62									62
Sagaga	74		20	94	29		64	93					187
Rest of Upolu Total	470		172	642	57	10	87	154					796
Savali													
Faasaleleaga No. 1	66		20	86	14		25	39					125
Faasaleleaga No. 2	44		18	62	12	24		36					98
Itu Asau No. 1	35		17	52									52
Itu Asau No. 2	30			30									30
Itu-o-Tane No. 1	38		34	72									72
Itu-o-Tane No. 2	47		16	63		10		10					73
Palaull	72		16	88			25	25					113
Savali Sifafo	63		26	89									89
Savali Total	395		147	542	26	34	50	110					652
Grand Total	1162		520	1682	153	111	248	512	111	42	14	167	2361



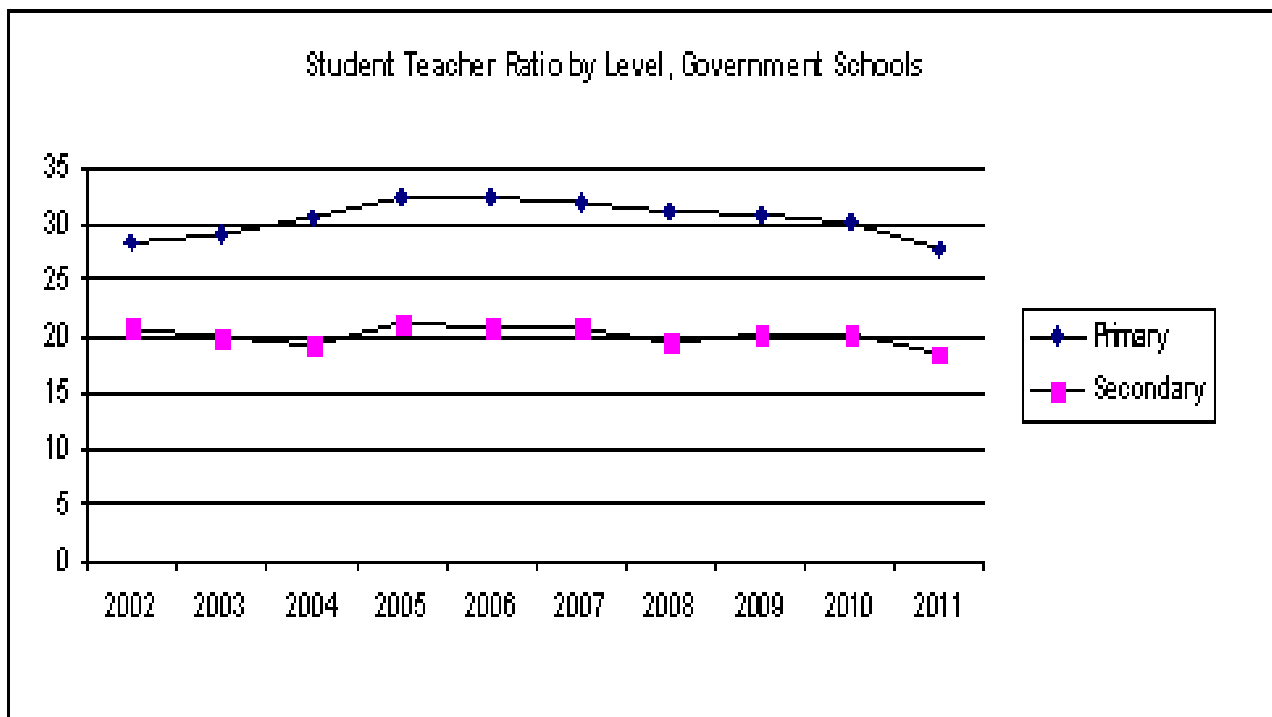
Student-Teacher ratios by school type and district, 2011

Region/District	Government				Mission				Private				Total
	Primary	Pri-Sec	Secondary	Total	Primary	Pri-Sec	Secondary	Total	Primary	Pri-Sec	Secondary	Total	
Apia Urban													
Faleata	32		15	29	25	19	23	21	17	8	15	14	22
Malifa			22	22									22
Vaimauga	34		17	27	28	25	20	24	16			16	25
Apia Urban Total	33		18	27	28	21	21	23	17	8.2	15	14	24
Rest of Upolu													
Aana No. 1	41		10	34	12	15	24	19					28
Aana No. 2	27		20	26									26
Aleipata	29		21	27									27
Anoamaa No. 1	23		18	21									21
Anoamaa No. 2	25			25	28			28					26
Fagaloa	18			18									18
Falealili	24		19	22									22
Leŋaga	32		11	23									23
Lepa/Lotoŋaga	23		13	19									19
Safata	26		30	27									27
Sagaga	34		10	29	30		22	25					27
Rest of Upolu Total	29		17	26	25	15	23	23					25
Savaii													
Faasaleleaga No. 1	25		21	24	19		13	15					21
Faasaleleaga No. 2	19		22	20	18	14		16					18
Itu Asau No. 1	23		26	24									24
Itu Asau No. 2	24			24									24
Itu-o-Tane No. 1	23		16	20									20
Itu-o-Tane No. 2	21		24	22		16		16					21
Palauli	23		28	24			15	15					22
Savaii Sisifo	25		21	24									24
Savaii Total	23		22	23	19	15	14	15					21
Grand Total	28		19	25	25	18	20	21	17	8.2	15	14	24



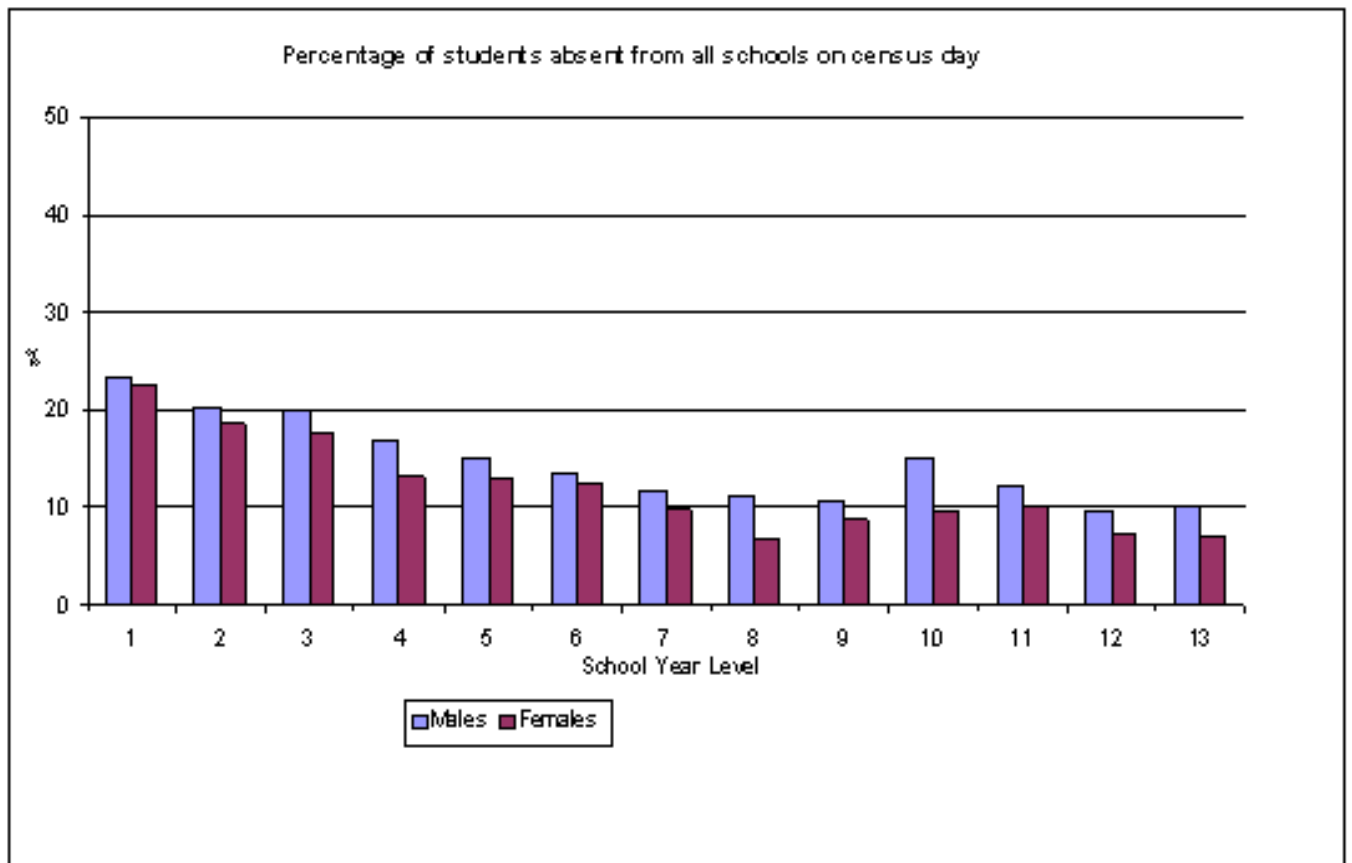
Student Teacher Ratio by Level, Government Schools

Level	Primary Student Teacher Ratio	Secondary Student Teacher Ratio
2002	28.4	20.8
2003	29.2	20.1
2004	30.8	19.3
2005	32.5	21.3
2006	32.5	20.7
2007	32.1	20.9
2008	31.3	19.8
2009	30.9	20.3
2010	30.2	20.3
2011	28.0	18.8



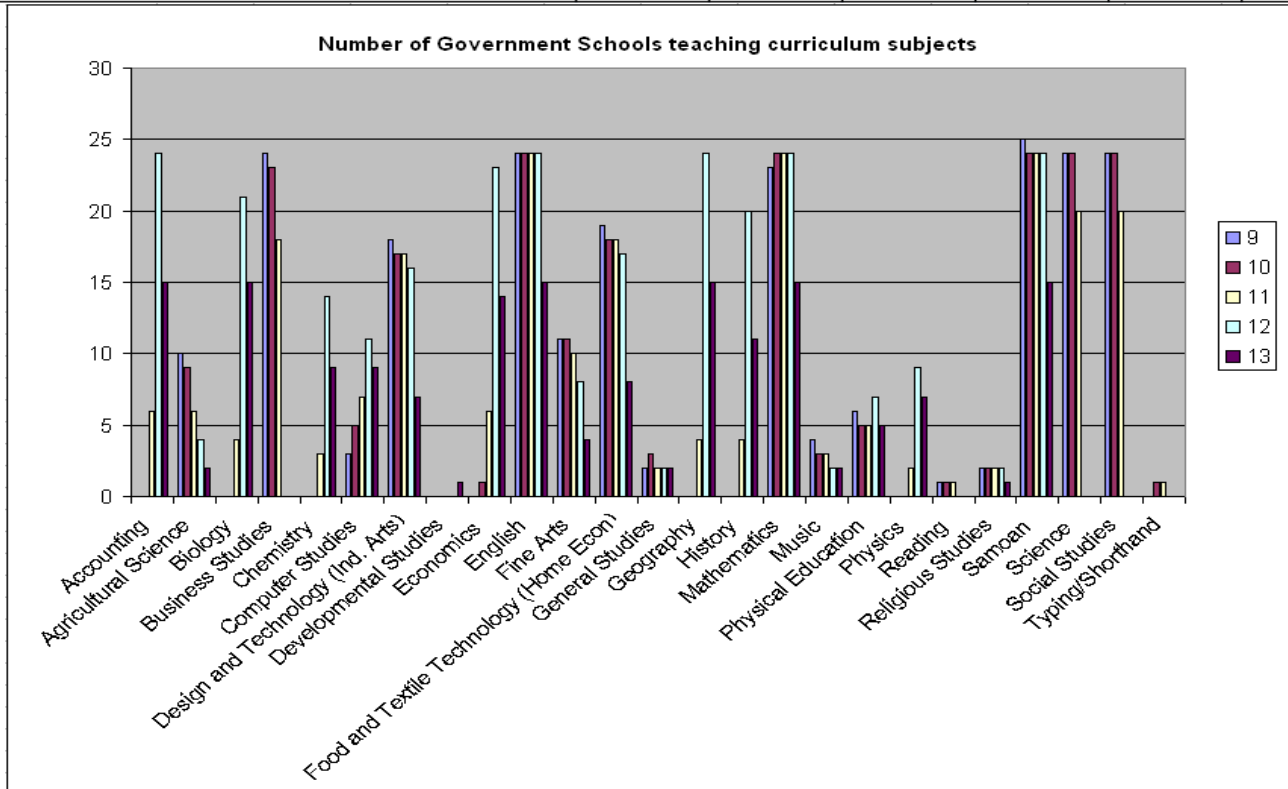
Number of students absent of Census Day

Level	Student Enrolments			No. of students absent			% Absentees		
	Males	Females	Total	Males	Females	Total	Males	Females	Total
1	2,775	2,695	5,470	650	610	1,260	23.4	22.6	23.0
2	2,606	2,563	5,169	529	475	1,004	20.3	18.5	19.4
3	2,539	2,310	4,849	504	405	909	19.9	17.5	18.7
4	2,560	2,348	4,908	434	311	745	17.0	13.2	15.2
5	2,492	2,243	4,735	376	290	666	15.1	12.9	14.1
6	2,381	2,348	4,729	325	296	621	13.6	12.6	13.1
7	2,400	2,171	4,571	281	215	496	11.7	9.9	10.9
8	2,468	2,215	4,683	273	154	427	11.1	7.0	9.1
9	2,160	2,124	4,284	231	187	418	10.7	8.8	9.8
10	1,847	2,038	3,885	278	195	473	15.1	9.6	12.2
11	1,485	1,813	3,298	183	183	366	12.3	10.1	11.1
12	1,294	1,476	2,770	124	108	232	9.6	7.3	8.4
13	930	1,219	2,149	96	87	183	10.3	7.1	8.5



Number of Government Secondary Schools Teaching Curriculum Subjects by Level

Subject	Secondary Level					Total
	9	10	11	12	13	
Accounting			6	24	15	24
Agricultural Science	10	9	6	4	2	10
Biology			4	21	15	21
Business Studies	24	23	18			24
Chemistry			3	14	9	14
Computer Studies	3	5	7	11	9	11
Design and Technology (Ind. Arts)	18	17	17	16	7	18
Developmental Studies					1	1
Economics		1	6	23	14	23
English	24	24	24	24	15	24
Fine Arts	11	11	10	8	4	11
Food and Textile Technology (Home Econ)	19	18	18	17	8	19
General Studies	2	3	2	2	2	3
Geography			4	24	15	24
History			4	20	11	20
Mathematics	23	24	24	24	15	24
Music	4	3	3	2	2	4
Physical Education	6	5	5	7	5	7
Physics			2	9	7	9
Reading	1	1	1			1
Religious Studies	2	2	2	2	1	2
Samoan	25	24	24	24	15	25
Science	24	24	20			24
Social Studies	24	24	20			24
Typing/Shorthand		1	1			1



Primary school facilities by Controlling Authority, 2011

Controlling Authority	Facilities							
	Enrolment	Classrooms	Student Desks	Student Chairs	Computers	TVs	Telephones	Photocopiers
Baptist	502	31	739	739	12	2	5	3
Catholic	2,674	85	3,344	3,345	86	7	8	7
Government	32,493	1,336	25,349	24,122	198	26	41	114
L.D.S.	222	10	252	208	36	4	2	2
Methodist	366	12	370	370	1	1	3	1
Peace Chapel	249	10	232	266	3	1	1	2
S.D.A.	107	6	70	70	6	1	1	1
School Board/Com	1,612	62	1,609	1,596	76	4	12	8
Total	38,225	1,552	31,965	30,716	418	46	73	138

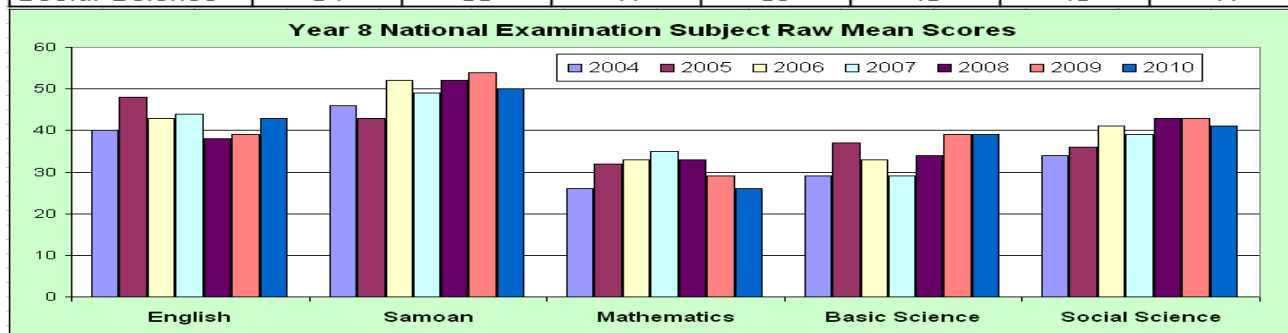
Secondary school facilities by Controlling Authority, 2011

Controlling Authority	Facilities							
	Enrolment	Classrooms	Student Desks	Student Chairs	Computers	TVs	Telephones	Photocopiers
C.C.C.S.	2,769	75	2,716	3,130	52	1	7	6
Catholic	1,411	64	2,018	2,059	140	4	9	8
Government	9,675	299	7,665	7,302	178	24	21	19
L.D.S.	1,260	57	1,240	2,039	280	24	17	6
Methodist	1,123	33	1,124	1,128	79	2	2	3
S.D.A.	480	18	550	560	41	1	4	1
School Board/Com	557	27	800	795	52	2	6	4
Total	17,275	573	16,113	17,013	822	58	66	47

*Part 2 – Data from Sources other than School
Census Information System*

¹Average raw score at National Yr. 8 Examinations
All (Government and Non Government) for Core Subjects

Subjects	2004	2005	2006	2007	2008	2009	2010
English	40	48	43	44	38	39	43
Samoan	46	43	52	49	52	54	50
Mathematics	26	32	33	35	33	29	26
Basic Science	29	37	33	29	34	39	39
Social Science	34	36	41	39	43	43	41

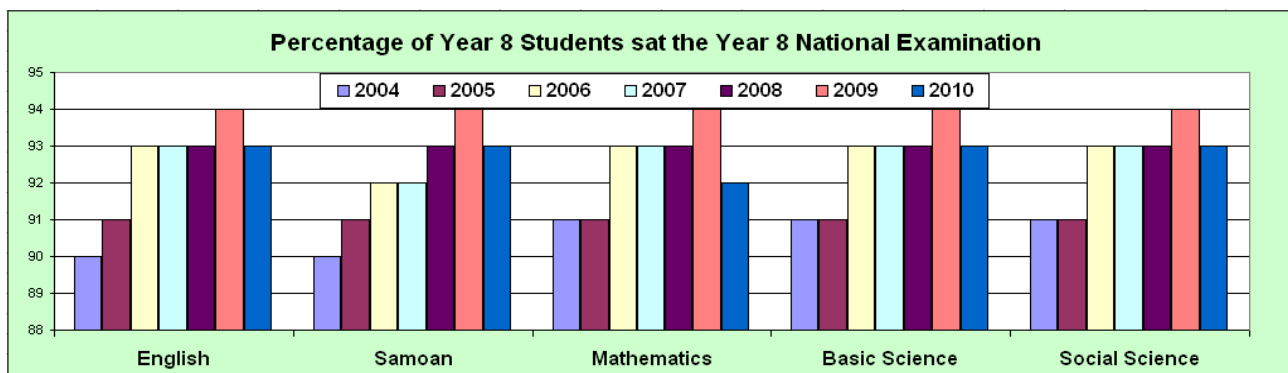


Number of Students sitting Yr. 8 National Examinations

Subjects	2004	2005	2006	2007	2008	2009	2010
English	3961	4122	4171	4256	4396	4756	4561
Samoan	3929	4110	4123	4224	4396	4756	4562
Mathematics	3964	4122	4171	4256	4396	4756	4522
Basic Science	3965	4121	4171	4256	4396	4756	4556
Social Science	3966	4121	4171	4256	4396	4756	4556

Percentage of Yr.8 Students² that sat the Yr.8 National Examination
All Students (Government and Non-Government)

Subjects	2004	2005	2006	2007	2008	2009	2010
English	90	91	93	93	93	94	93
Samoan	90	91	92	92	93	94	93
Mathematics	91	91	93	93	93	94	92
Basic Science	91	91	93	93	93	94	93
Social Science	91	91	93	93	93	94	93



Year 8 National Examination Pass Rate

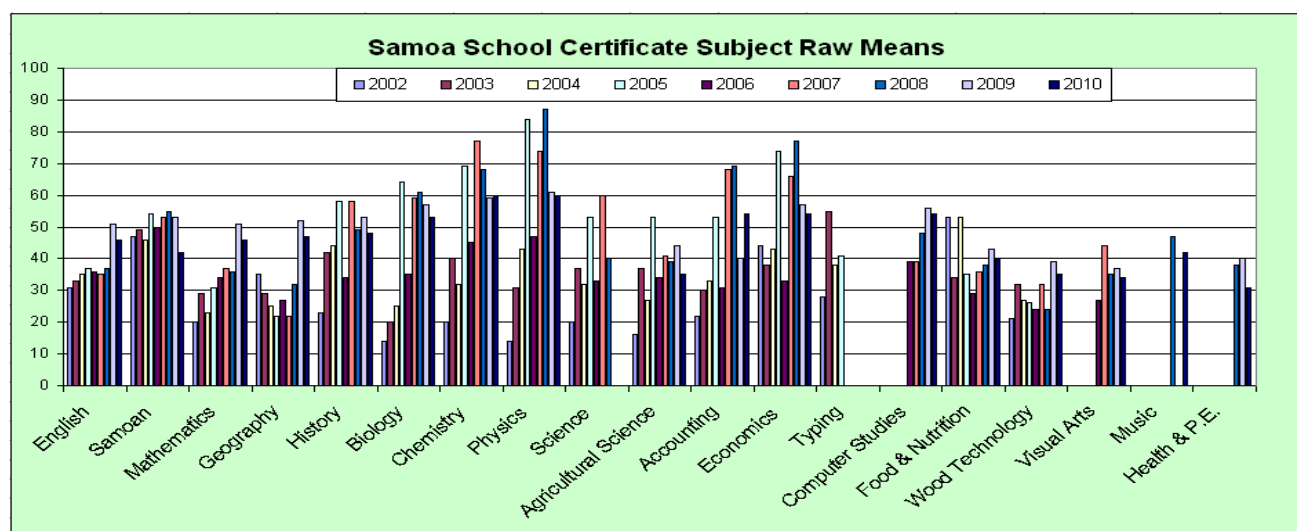
Exam	2006	2007	2008	2009	2010
Pass National Year 8 Exam	2266	2312	2377	2718	1819
Number of students who sit the National Year 8 Examination	4171	4256	4396	4756	4561
Percentage of Year 12 students pass the National Year 8 Examination	54%	54%	54%	57%	40%

¹ Data at this stage is not available disaggregated by gender, location etc. (This is required to calculate performance measures 1.2, 1.4 of the Performance Framework)

² The percentage of year 8 students sitting year 8 exams is a measure of year 8 completion rate.

**Average Raw Score at National Year 12 Examinations
All (Government and Non Government) for Core Subjects³**

	2002	2003	2004	2005	2006	2007	2008	2009	2010	Student sitting exam 2010
English	31	33	35	37	36	35	37	51	46	2353
Samoan	47	49	46	54	50	53	55	53	42	1824
Mathematics	20	29	23	31	34	37	36	51	46	2002
Geography	35	29	25	22	27	22	32	52	47	797
History	23	42	44	58	34	58	49	53	48	553
Biology	14	20	25	64	35	59	61	57	53	508
Chemistry	20	40	32	69	45	77	68	59	60	323
Physics	14	31	43	84	47	74	87	61	60	210
Science	20	37	32	53	33	60	40			
Agricultural Science	16	37	27	53	34	41	39	44	35	61
Accounting	22	30	33	53	31	68	69	40	54	499
Economics	44	38	43	74	33	66	77	57	54	525
Typing	28	55	38	41						
Computer Studies					39	39	48	56	54	787
Food & Nutrition	53	34	53	35	29	36	38	43	40	251
Wood Technology	21	32	27	26	24	32	24	39	35	196
Visual Arts					27	44	35	37	34	186
Music							47		42	18
Health & P.E.							38	40	31	192



**Number of Students⁴ sitting National Year 12 Examination
All (Government and Non Government)**

Number of Students	2007	2008	2009	2010
Sat National Year 12 Exam	2228	2317	2330	2886
Enrolment in Year 12 (School Census)	2909	2863	2926	2930
Percentage of Year 12 Students that sat the Year 12 Exam	77%	81%	80%	98%

Year 12 Examination Pass Rate

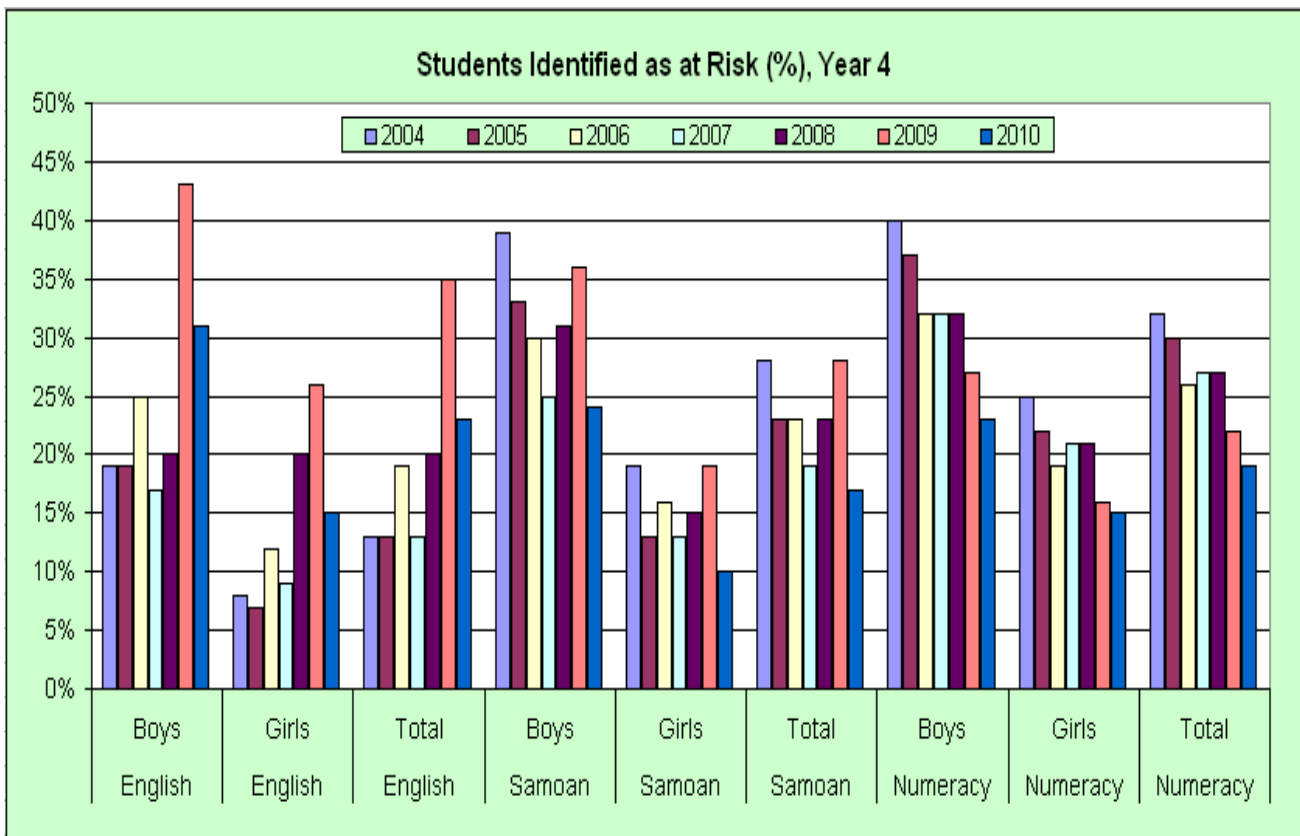
Exam	2006	2007	2008	2009	2010
Pass National Year 12 Exam	1131	1085	1060	1311	1662
Number of students who sit the National Year 12 Examination	2343	2228	2317	2330	2886
Percentage of Year 12 students pass the National Year 12 Examination	48%	49%	46%	57%	74%

³ Data at this stage is not available disaggregated by gender, location (1.2, 1.4 of the Performance Framework).

⁴ Total number of students who sat any one of the year 12 exams. Note that no subjects are compulsory at year 12, however most students undertake English, Samoan and Mathematics. However, individual schools may have a policy of some subjects being compulsory.

**Primary Students Identified as at Risk⁵, Year 4, All Schools (Government and Non- Government)
Results from SPELL One Test**

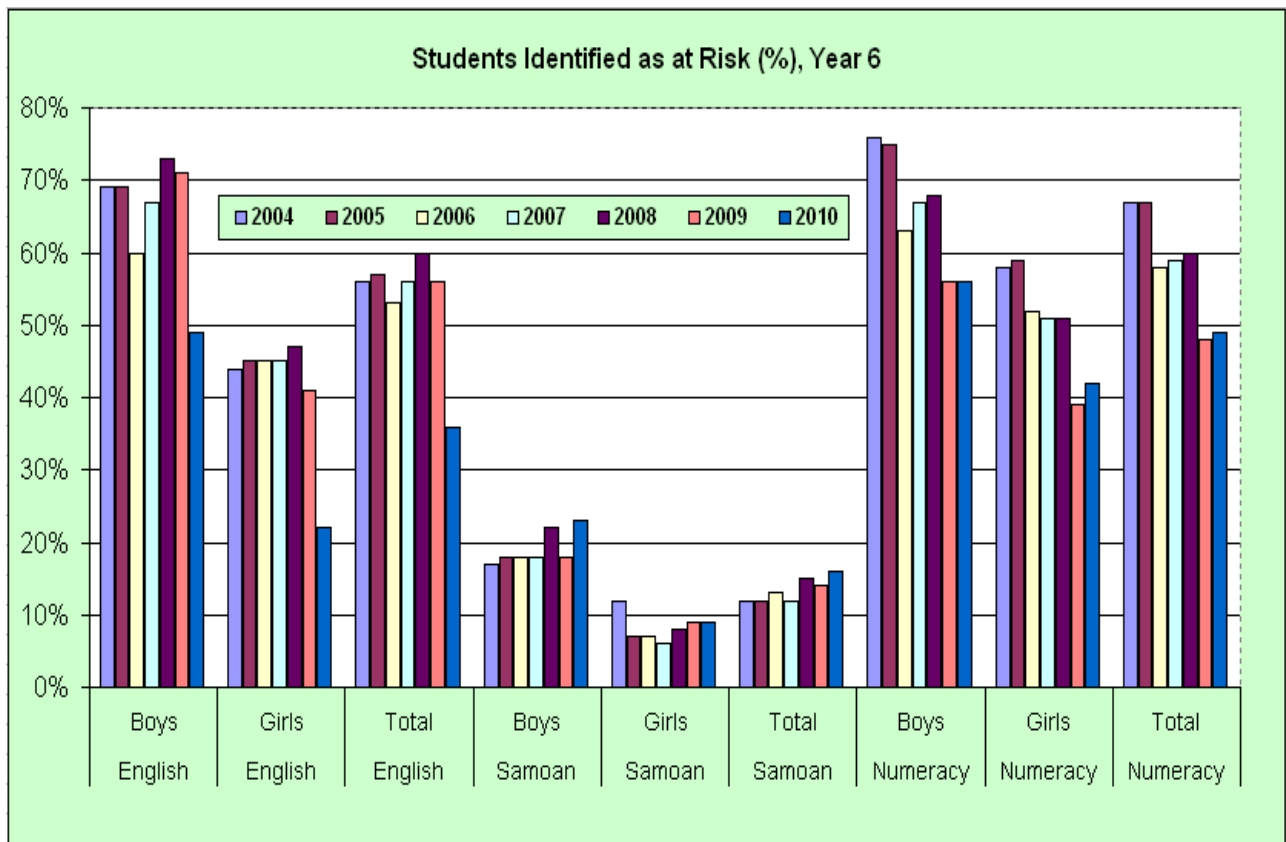
Subjects	Gender	2004	2005	2006	2007	2008	2009	2010
English	Boys	19%	19%	25%	17%	20%	43%	31%
English	Girls	8%	7%	12%	9%	20%	26%	15%
English	Total	13%	13%	19%	13%	20%	35%	23%
Samoan	Boys	39%	33%	30%	25%	31%	36%	24%
Samoan	Girls	19%	13%	16%	13%	15%	19%	10%
Samoan	Total	28%	23%	23%	19%	23%	28%	17%
Numeracy	Boys	40%	37%	32%	32%	32%	27%	23%
Numeracy	Girls	25%	22%	19%	21%	21%	16%	15%
Numeracy	Total	32%	30%	26%	27%	27%	22%	19%



⁵ A test taken by all year 4 students in Government schools. Most non-Government schools also participate, but it is not compulsory. It provides an indication of the students whose learning outcomes are identified as being at risk so that they receive attention from teachers in their reading and numeracy programmes.

Primary Students identified as at Risk⁶, Year 6, Government Schools
Results from SPELL Two Test

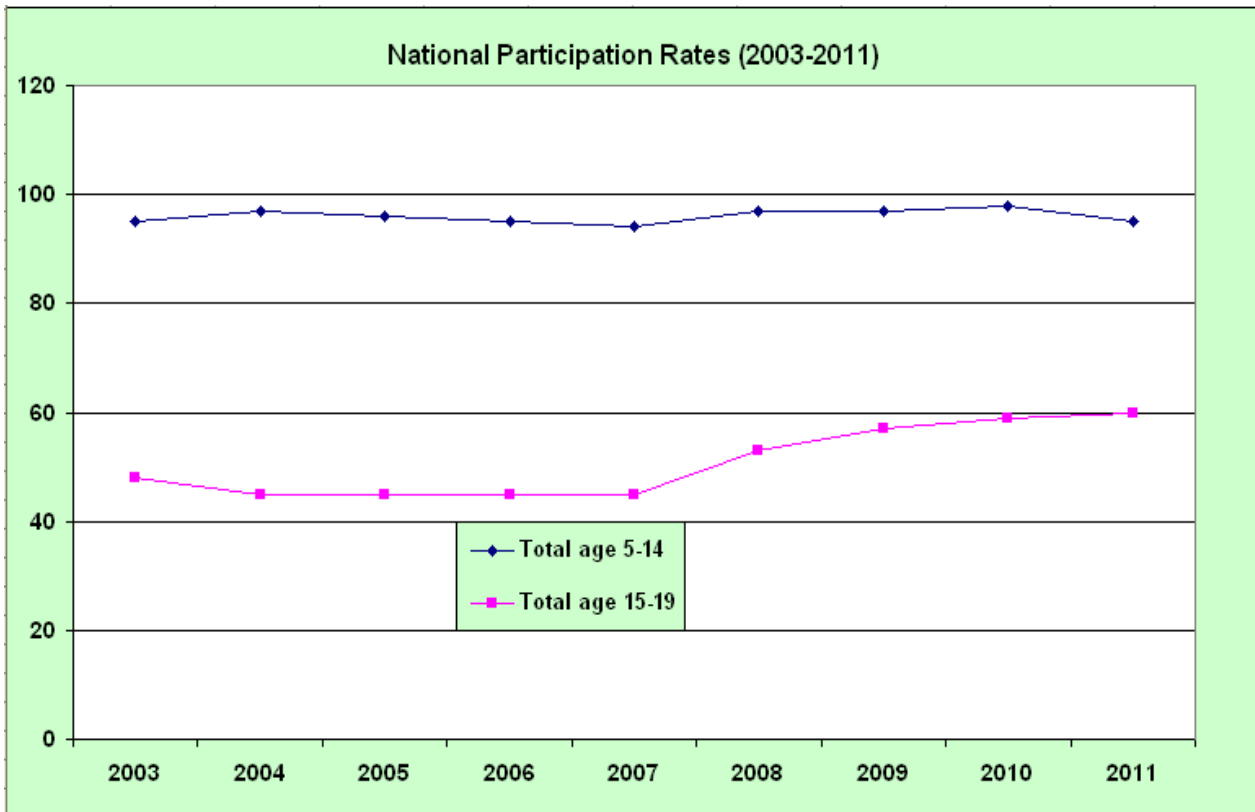
Subjects	Gender	2004	2005	2006	2007	2008	2009	2010
English	Boys	69%	69%	60%	67%	73%	71%	49%
English	Girls	44%	45%	45%	45%	47%	41%	22%
English	Total	56%	57%	53%	56%	60%	56%	36%
Samoan	Boys	17%	18%	18%	18%	22%	18%	23%
Samoan	Girls	12%	7%	7%	6%	8%	9%	9%
Samoan	Total	12%	12%	13%	12%	15%	14%	16%
Numeracy	Boys	76%	75%	63%	67%	68%	56%	56%
Numeracy	Girls	58%	59%	52%	51%	51%	39%	42%
Numeracy	Total	67%	67%	58%	59%	60%	48%	49%



⁶ A test taken by all year 6 students in Government schools. Most non-Government schools also participate, but it is not compulsory. It provides an indication of the students whose learning outcomes are identified as being at risk so that they receive attention from teachers in their reading and numeracy programmes.

National Participation Rate

	2003	2004	2005	2006	2007	2008	2009	2010	2011
Male age 5-14	95	97	96	95	94	94	98	97	93
Female age 5-14	95	96	95	95	95	99	96	95	98
Total age 5-14	95	97	96	95	94	97	97	98	95
Male age 15-19	44	42	42	41	42	49	53	52	53
Female age 15-19	53	49	49	48	49	57	61	66	67
Total age 15-19	48	45	45	45	45	53	57	59	60



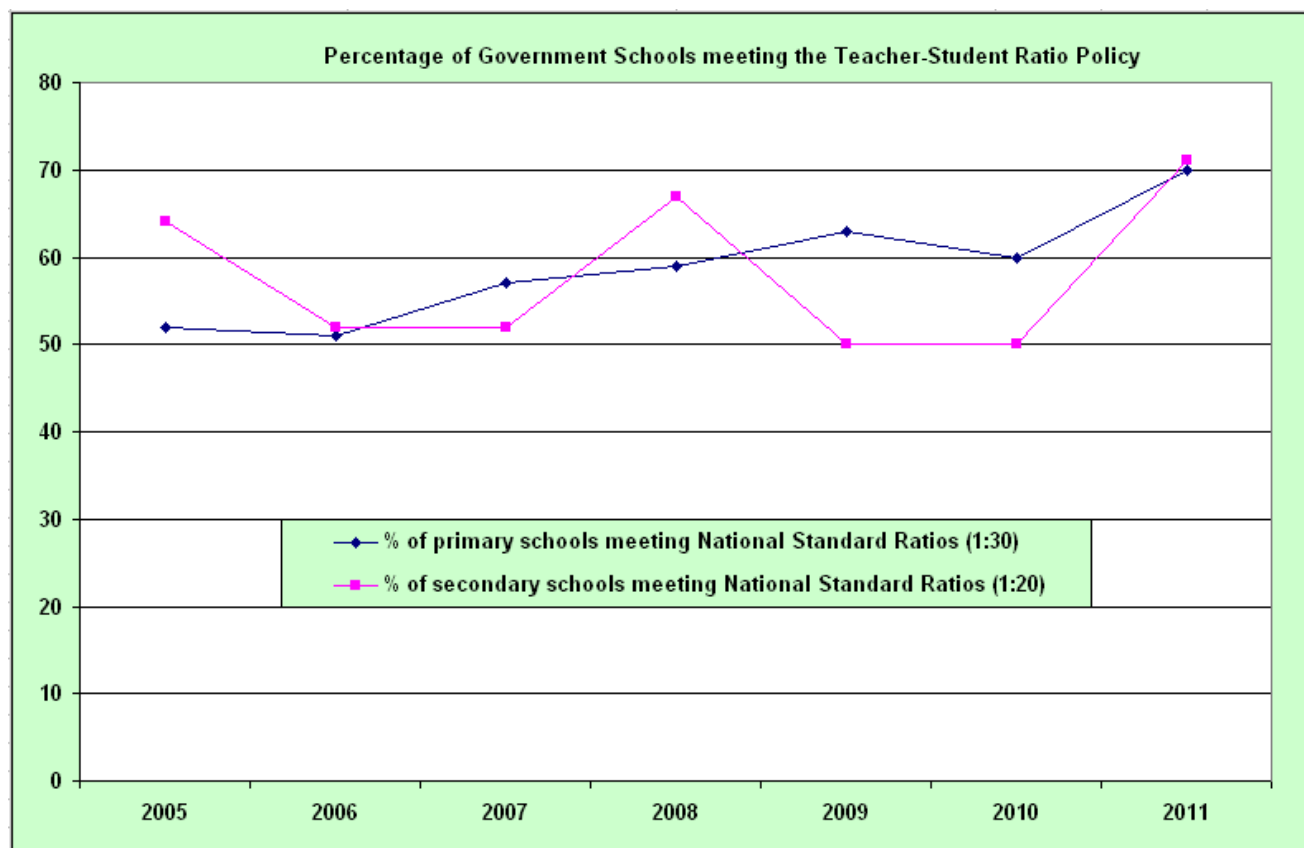
Source: Population estimates were provided by the Statistical Services Division of the Ministry of Finance and UNESCO

Number of Government Schools that are meeting the National Standards for Primary Students – Teacher Ratio of 1 Teacher to 30 Students (1:30)

Year	No. of primary schools meeting National Standard Ratios (1:30)	No. of primary schools above the National Standard Ratios (1:30)	% of primary schools meeting National Standard Ratios (1:30)
2005	73	68	52
2006	72	69	51
2007	80	61	57
2008	83	57	59
2009	88	52	63
2010	85	57	60
2011	109	33	70

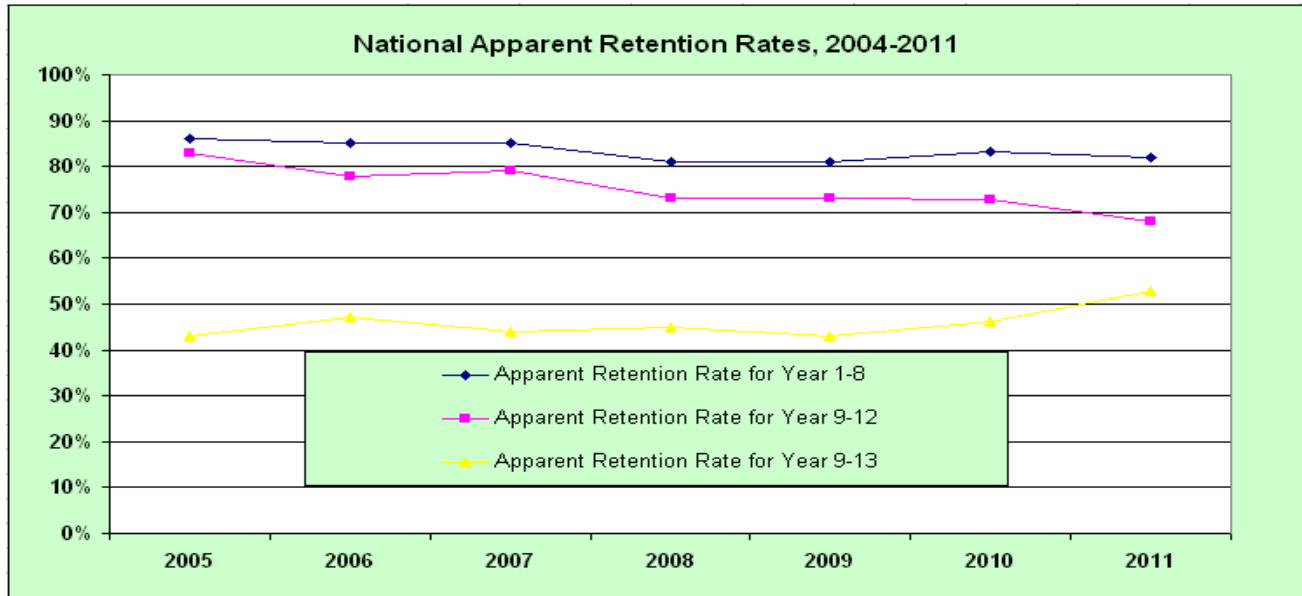
Number of Government Schools that are meeting the National Standards for Secondary Students – Teacher Ratio of 1 Teacher to 20 Students (1:20)

Year	No. of secondary schools meeting National Standard Ratios (1:20)	No. of secondary schools above the National Standard Ratios (1:20)	% of secondary schools meeting National Standard Ratios (1:20)
2005	16	9	64
2006	13	12	52
2007	13	12	52
2008	16	8	67
2009	12	12	50
2010	12	12	50
2011	14	10	71



Apparent retention rate⁷ for All Schools

Year Level	2004	2005	2006	2007	2008	2009	2010	2011
Apparent Retention Rate for Year 1-8	84%	86%	85%	85%	81%	81%	83%	82%
Apparent Retention Rate for Year 9-12	77%	83%	78%	79%	73%	73%	73%	68%
Apparent Retention Rate for Year 9-13	48%	43%	47%	44%	45%	43%	46%	53%



Students commencing First Year of Tertiary Studies⁸

Year	Institute of Higher Education (IHE)	Institute of Technology (IOT)	University of the South Pacific (USP)	Total
2006	557	353	Not Available	910
2007	529	384	Not Available	913
2008	456	438	Not Available	894
2009	442	308	Not Available	750
2010	701	476	Not Available	1177
2011	1062	603	Not Available	1665

Transition Rate⁹ from Year 13 to identified Tertiary Education

Year	Enrolment in Year 13	Total Tertiary Enrolment	Transition Rate from Year 13 to Tertiary
2006	1756	910	57
2007	1652	913	52
2008	1657	894	54
2009	1669	750	45
2010	1853	1177	64
2011	2149	1665	77

⁷ Apparent Retention Rate compares the number of students in a given year with the size of the cohort some years ago. For example, the apparent retention rate of Year 9-12 for 2010 is calculated as the number of students in year 12 in 2010 divided by the number of students who were in Year 9 in 2007.

⁸ Students commencing at USP are not included.

⁹ Transition rate into Post School Education is the number of students who commenced post-school education in 2010 (Institute of Higher Education, Institute of Technology) as a percentage of the students who were in Year 13 in 2009. Students commencing at USP are not included.



